



DESIGNED, DEVELOPED &
MANUFACTURED IN THE UK



NORTHERN DIVER

MINE WARFARE & MILITARY DIVING SPECIALISTS

Northern Diver (International) Ltd. 2025 © All Rights Reserved

Photographs, graphics, images, copy, products and designs
are property of Northern Diver Ltd. unless otherwise specified.
Do not recreate or redistribute without
prior permission from the owner.

When operational success depends on reliability, precision, and performance, you need gear built to endure the world's harshest environments.

With over 40 years of experience, Northern Diver (International) Ltd is the UK Ministry of Defence's chosen manufacturer for Diving and Life Support Equipment, trusted by elite forces worldwide. We specialise in the design and manufacture of cutting-edge diving apparel and associated systems.

We currently hold multiple international contracts to supply comprehensive Military Diving Systems, including:

- Diver Wear
- Underwater Breathing Systems
- Diver Propulsion Vehicles
- Diver Navigational Platforms

Our extensive military product range supports a wide spectrum of mission types, with equipment designed for:

- Clearance Divers – EOD Teams
- Army, Navy, and Marine units
- Combat Swimmers and Special Operators
- Salvage Units
- Underwater Demolition Teams
- Rescue and Police Divers
- And many more

Northern Diver delivers a complete operational package—offering a full spectrum of mission-ready equipment, supported by in-house servicing, maintenance, training, and testing at our facility in the North West of England.



CATALOGUE CONTENTS

SPECIAL OPERATIONS	010 - 037
DRYSUITS + SURFACE APPAREL	038 - 057
THERMALS & WETSUITS	058 - 073
GLOVES, BOOTS & BAGS	074 - 089
DIVE EQUIPMENT	090 - 117
INFLATABLE EQUIPMENT	118 - 123



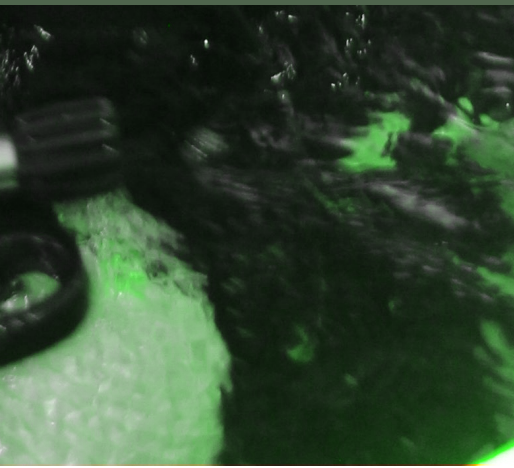
OUR SERVICES

For over 20 years, Northern Diver has proudly supplied the UK Ministry of Defence alongside many other global military specialists and clients. With over 70 dedicated staff, our military team is backed by an intersectional business model that draws on expertise across four specialist diving sectors: Military, Commercial, Recreational, and Rescue. This unique structure allows us to provide not only combat swimming knowledge and experience, but also a wealth of cross-sector innovation and support.

From our humble beginnings over 40 years ago, we have grown into a state-of-the-art headquarters and retail showroom in Appley Bridge, now home to 70+ skilled staff members. Together, we are committed to delivering future-proof technologies, the most reliable equipment, and unrivalled services.

More than just hardware, our in-house facilities provide end-to-end support, including training, branding, repairs, and testing — ensuring that every client benefits from Northern Diver's complete service offering.

- Retail Showroom & HQ Tours
- Custom Branding Creation & Application
- Made To Measure (MTM) Drysuits
- Suit Testing And Repairs
- Cylinder Testing, Repairs & Refills
- 22.5m deep Dive Training & Test Tank





QUALITY ASSURED

Norther Diver products and services are stringently audited and certified. We work to ISO 9001 and 14001 certified standards, providing comprehensive quality assurance processes at every step of the way from development, through production, manufacture, and testing. We are also dedicated to quality control, testing our products and processes regularly. If a client requires extra assistance or support, our specialists are readily available via telephone, email, video conferencing, or to make visits to ensure effective troubleshooting.



BESPOKE SOLUTIONS

We are some of the first to recognise the ever-evolving threats that our armed forces face, hence, we are tirelessly researching with university collaborators and defence tacticians, developing products that can effectively assist in combat diving operations. Our tailored approach means working closely with each client to manufacture bespoke solutions for their exact operational requirements. This is in addition to the extensive range of products listed within this brochure.

Browse our range, and get in touch with any queries or requests, so that we can help your team reach its full operational potential.



CYLINDER TESTING FACILITY

Our cylinder testing facility was opened in 2021, and our engineers are a highly knowledgeable and skilled team, testing both personal tanks and in bulk; for sports divers, military applications, and contractors alike - to make sure that your underwater lifeline is in the safest and most ideal condition.

Utilising the latest precision water-pressure measuring testing techniques, our technicians carefully and thoroughly check for internal and external damage, rusting, corrosion from salt or brackish conditions, and general wear and tear. They will also check the valves and rings, right down to the thread of the attachments.

Whether for individual testing, or a round of 2,000 tanks testing ready for combat applications, we are equipped to test, repair, clean, and replace your tanks to the greatest technical specifications.



DRYSUITS - BUILT TO LAST

Northern Diver grew from drysuit manufacture, with our founder creating them in his terrace house 45 years ago. Today, we are the premier name in specialist drysuit and semi-drysuit production and technology. Every suit we produce is manufactured to exact specifications, ensuring consistent performance and uncompromising reliability. Alongside our made-to-measure design services and in-house team/organisation branding, we remain dedicated to keeping your suits in prime condition throughout their lifetime.

With our testing suite and repairs division — staffed by experts with over 170 years of combined experience in functional testing, design, and repairs — your equipment is assured to be cared for by the most knowledgeable and skilled hands in the industry.





22.5M DIVE TEST TANK

We broke ground on our stainless-steel dive tank in 2014, with the facility completed and officially opened in June 2021. Standing at an impressive 22.5 metres (74 feet) in depth, the tank is one of the deepest of its kind in the UK. It is fully illuminated for visibility at every level, and equipped with a 1-tonne capacity overhead crane for above-water suspensions, controlled trials, and safe equipment handling.

Supporting facilities include an adjacent classroom, changing rooms, and cylinder filling stations, making the tank a complete training and testing environment. It is regularly used to host the Defence Dive School, along with military units and specialist teams from across the world, who rely on it for training, controlled exercises, and product familiarisation.

For Northern Diver, the tank is more than a training space — it is central to our research and development process. By testing new products in-house, our engineers receive immediate feedback, allowing us to refine designs with speed and accuracy. The ability to move directly from concept to underwater trials in a controlled environment gives us an unparalleled advantage in bringing innovative, proven products to market quickly.





SPECIAL OPERATIONS

012	DT4 - DIVE THRUSTERS
016	NIMROD V2 UNDERWATER NAVIGATION & SONAR
018	NIMROD ELITE
020	ODYSSEY FULL FACE MASK BREATHING SYSTEM
026	DIGITAL TACTICAL SWIM BOARD
027	NPS NAVIGATIONAL PLATFORM SYSTEM
028	DIGITAL DEPTH GAUGE & COMBAT SWIM BOARDS
029	FLEXI-LIGHTS FLEXIBLE LIGHT STICKS
030	INCURSION REBREATHERS
032	ARION - ASSET RECOVERY
034	HEATED GLOVES & SOCKS

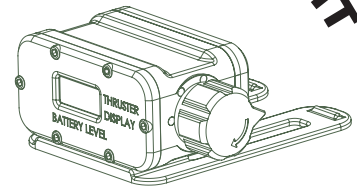


DIVE THRUSTERS

SKU ND0001436

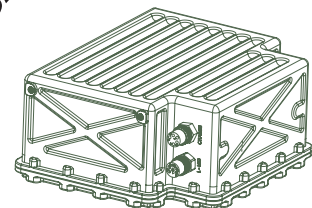
A state-of-the-art wearable system offering military operators the advantage of battery powered underwater propulsion to enhance performance and reduce fatigue during missions. Performs with variable speeds up to 3.0mph / 4.8kmph (2.6kts) as standard, with maximum speeds of up to 4.0mph / 6.44kmph (3.5kts).

CONTROLLER UNIT



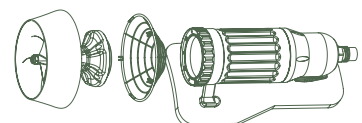
- Variable speed control
- Displays battery level
- Covert mode available
- OLED display

BATTERY HOUSING



- Belt or harness compatible
- Anodised Aluminium casing
- Li-ion battery
- Lightweight

THRUSTER UNIT X2



- Magnetic coupling drive
- Aluminium propellers
- Reduced noise

STANDARD SPECIFICATIONS

With the standard DT4 Dive Thrusters set-up as sold with single battery unit and 2 of the thrusters fastened either on the belt or harness configurations.

Run Time	60 minutes
Thrust/Propulsion	22.5kg
Max Operating Speed	3.5mph (5.63kph)
Input	25.9V 20A
Output	29.4V 50A
Battery Capacity	42Ah
Typical Charge Time	5.5hrs (330mins)
Battery Type	Li-ion
Thruster Weight	8.2kg ea.
System Weight	14.6kg

DUAL BATTERY UNIT BREAKDOWN

For extended endurance during demanding underwater operations, two dive thruster batteries can be seamlessly linked to provide significantly longer durations. This configuration offers divers enhanced performance and extended operational capability, meeting the rigorous demands of military and professional underwater missions.

Electronic connection between the batteries is achieved using a durable 5-pin cable, engineered for reliability in harsh underwater environments.

Operational Time	200 minutes
Top Speed	4.8kph (2.6kts)
Max Range	15km
Dual System Dry Weight	22.6kg (49.8lbs)

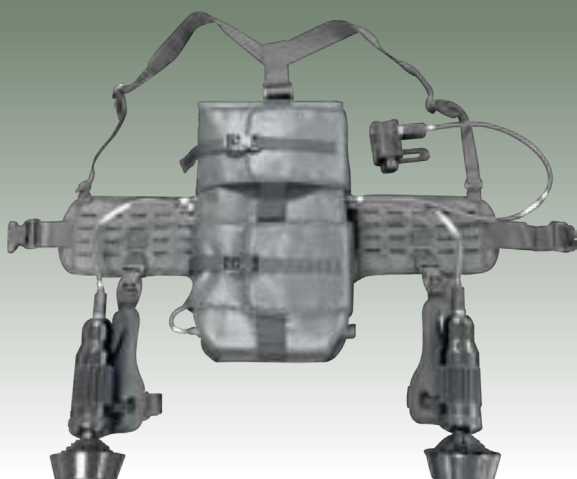


CONFIGURATIONS & HARNESES

The V2 generation of DT4 underwater thrusters are compatible with these configurations:

- Shoulder & waist harness
- Hip-mounted belt
- Option to adapt to a dual battery harness

The various user groups applications have been considered when designing and configuring the thrusters harness systems. The equipment has been refined for seamless integration with the user's standard kit. The thrusters include two choices of harness and belt for wearing the kit, which are interchangeable; and a jetpack-style configuration.



Above : over-the-shoulder harness & belt configuration



Above: belt-only configuration
Left: dual battery harness/belt configuration

PROPULSION THRUSTERS



- 1 Battery Power Display
- 2 Controller Power Port
- 3 Adjustable Speed Dial
- 4 Mounting Bracket
- 5 Marine Stainless Steel Fittings
- 6 Corrosion Resistant Aluminium Propellers
- 7 Magnetic Coupling
- 8 Weight Reducing Body Design
- 9 Sealed Motor
- 10 Thruster Power Port
- 11 Bracket Attachments
- 12 Protective Guard

Available upon request, speak to our military sales team to discuss your requirements



Our NIMROD navigators can control the DT4 thrusters, giving the diver complete control, whilst maintaining a smooth underwater profile.



MAINTENANCE KIT

Protects, lubricates, and maintains the best signal quality of the thruster connector cable pins. Consistent maintenance of the cable pins helps reduce intermittent connections, arcing, RFI, wear and abrasion and provides long-lasting protection from oxidation on the plated surface.



CLEANING KIT

The kit features the basic items required to maintain the operation of your dive thrusters and includes a small waterproof hard case for easy transport.

Each kit includes allen keys, spanner, propeller kits, storage case and Molykote 44 silicone grease.



SPARE PARTS

ALL components that make up the Northern Diver DT4 Dive Thruster System can be bought as a separate part if required. Each component is easy to order and available for quick delivery in most cases.

Contact us to discuss your requirements.

CONTACT THE MILITARY SALES TEAM FOR MORE INFORMATION OR TO BOOK A DEMO DAY

What's Included?

The standard system includes a user manual, certification pack, spare parts kit, controller unit, thruster units, battery housing, harness, required cables, 5-pin charger, and a transportation case. The DT4 system can be customised to customers request.



Scan the QR to learn more...

NIMROD V₂

NAVIGATION SONAR

SKU NIMROD-SB

NIMROD V2 is a compact and lighter weight modular diver hand-held sonar & navigation console. The system combines GPS receivers internal and external with 15m tether and float, mission planning, digital compass/gyroscope, depth reading and clock/stopwatch.



Bluetooth communication for sending and downloading missions



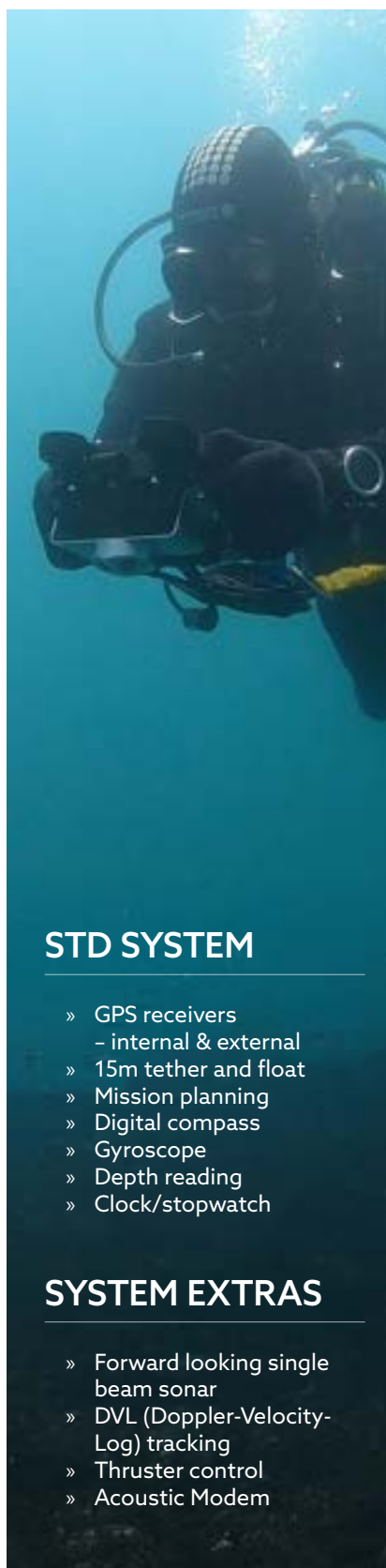
USB port for connection to a PC, used for updating firmware software

Contact the **Military Sales** team for more **information** or to book a **demo day**

TYPICAL USES

- » Unexploded ordnance by navy mine clearance divers, commercial EOD divers, etc.
- » Seabed infrastructure within the offshore oil & gas environment (e.g. pipelines, well heads, structures).
- » Vehicles, aircraft, wrecks by police or search & rescue divers.
- » Seabed/lake-bed antiquities by marine biologists, archaeologists, sport divers, etc.





STD SYSTEM

- » GPS receivers
 - internal & external
- » 15m tether and float
- » Mission planning
- » Digital compass
- » Gyroscope
- » Depth reading
- » Clock/stopwatch

SYSTEM EXTRAS

- » Forward looking single beam sonar
- » DVL (Doppler-Velocity-Log) tracking
- » Thruster control
- » Acoustic Modem

Display	7" high-resolution wide angle
Sonar	Multi-beam sonar
Navigation	Doppler Velocity Log (DVL), GPS float
Communication	Diver-to-surface communications
Imaging & Lighting	HD camera, torch
Power	Lithium-ion battery, wet-mateable aux battery
System	Modular, flotation housing
Processing	Quad-core ARM 1.8GHz, 4GB RAM, 265GB SSD (512GB opt)
Interface	5 piezo buttons, split-screen multi-tasking
Data Transfer	Bluetooth (mission planning, log analysis), USB3 (fast replay)
Software	Windows 7+ support; mission & dive log files
Data Storage	16GB flash (100hrs logging, expandable)
Sensors	Pressure (depth), leak detection, AHRS (pitch, roll, compass, gyros, battery monitor)
Antenna	TW1421 dual-feed GPS/GLONASS
Dimensions (LxWxH)	169*134*76mm (6.7*5.3*3")
Weight (with battery)	2.3 kg in air, 0.6 kg in water
Weight (with sonar + DVL)	3.75 kg in air, 0.8 kg in water
Construction	AL 6061-T6 aluminium, black hard anodised
Connectors	x4 LEMO W-series (GPS, sonar, DVL, aux)
Operating Depth	80 m (262 ft)
Temperature Range	0°C to +45°C operation, 10°C to +50°C storage
Power Supply	12-24V DC (internal battery pack)

What's Included?

The NIMROD V2 Console is fully customisable and includes sonar, a GPS float with 15m cable, charger, USB cable, software, spare O-rings, Allen keys, and user instructions – all supplied in a rugged R.A.I.D. case.



Scan the QR to learn more...

NIMROD[®] Elite

Powered by  Windows

ADVANCED NAV

SKU N-ELITE

The NIMROD Elite is the latest development in handheld sonar imagery, underwater navigation and communications. Utilising the latest technology available to ensure accuracy and precision whilst keeping a user friendly interface



APPLICATIONS

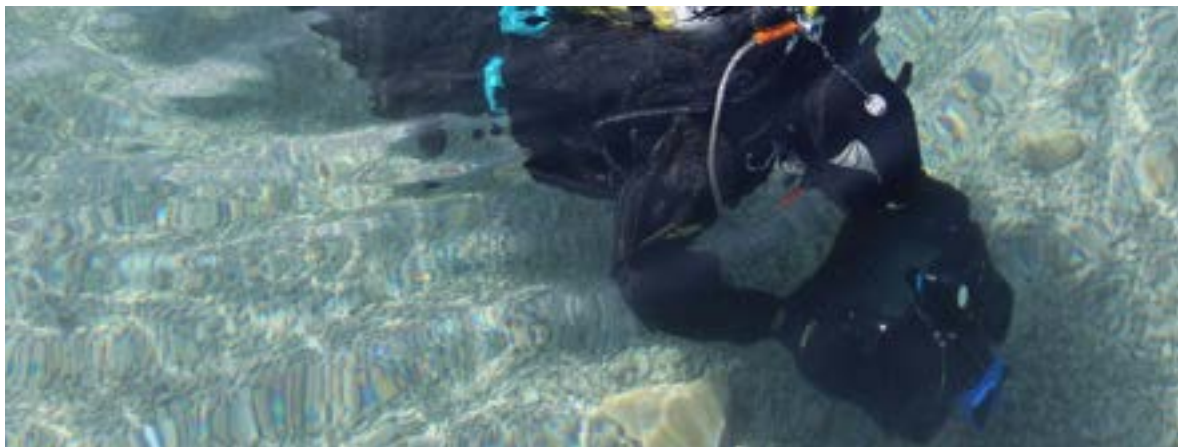
- » Military Diving & Reconnaissance Tasks
- » UW Mine Clearance & EOD Teams
- » Commercial Work
- » Offshore Surveying
- » Surface surveys and bottom profiling ops
- » Sub-Surface Navigation
- » Suitable for use in fresh or sea water

SONAR IMAGES

The 120° cone in the middle of the display shows the sonar image that the Gemini Sonar is producing. Around this display are the most commonly used controls. On the upper left hand corner are the controls for starting the sonar imaging, starting the software logging of the images received from the sonar, replaying previously logged data, and capturing images.

***“THE NEW ELITE IS
LIGHTWEIGHT, COMPACT
AND MODULAR ALLOWING
THE OPERATOR TO
CONFIGURE THE SYSTEM
TO THEIR APPLICATION
REQUIREMENTS”***

Screen Size	7" high-resolution wide-angle LCD display
Sonar Capability	Multi-beam sonar
Navigation	Doppler Velocity Log (DVL)
Communication	Diver-to-surface communications
Camera	Integrated HD camera
Lighting	High-intensity torch
Power Supply	Lithium-ion battery
Location Tracking	GPS float
Power Expansion	Wet-mateable auxiliary battery
Display Mode	Multi-task features with split-screen mode
System Design	Modular system
Buoyancy	Flotation buoyancy housing
Mission Planning	Transfer of mission plans via Bluetooth
Data Transfer	Fast dive replay transfer to PC via USB 3.0
Processing Power	Latest quad-core 1.8GHz ARM embedded platform
Memory & Storage	4GB RAM, 265GB SSD (512GB optional)



What's Included?

The NIMROD Elite is fully customisable to your specific operational needs and comes complete with all essential components and a rugged hard storage case for dependable protection.



Scan the QR to
learn more...

FULL FACE MASK

SKU ND000393

Built to perform in the harshest underwater conditions, the Odyssey establishes a new standard in military diving technology, providing operators with the confidence and assurance required to complete the mission.



Engineered to deliver uncompromising safety, comfort, and performance, the Odyssey is a precision-built solution designed for reliability in the most demanding operational environments. Every component is manufactured to exacting standards, ensuring optimal function and protection under pressure. From its impact-resistant polycarbonate lens to the precision-machined side block, each element has undergone rigorous testing to not only meet but exceed military and industry safety requirements—all while maintaining comfort and maximising field of vision.



Designed to comply with EN250 standards.



Designed, manufactured and tested in the UK.



Every serviceable component is fully replaceable.



Seamless gas management, low profile shape - less snag hazards.



KEY FEATURES

Integrated Regulator:

High-performance, low-profile design for streamlined breathing.

Impact-Resistant Lens:

Polycarbonate construction for maximum durability and visibility.

Silicone Mask Skirt:

Universal fit with an integrated oral-nasal pocket for enhanced airflow.

Side Block (Optional):

Enables simultaneous use of main and bailout cylinders. Ergonomically designed for single-handed operation.

LAWS (Optional):

Low Air Warning System provides wireless visual alerts for critical air levels.

Adjustable Straps & Harness:

Secure, fast-donning system for optimal fit on any face shape.

Mounting Options:

Pre-configured for accessories like cameras, torches, communication systems and welding visors.

Compliance:

EN250:2014, certified for diving up to 50m and tested in cold water environments ($4\pm 2^{\circ}\text{C}$).

Breathing Performance:

Optimised airflow system ensures efficient gas exchange, reducing CO_2 build-up and maintaining consistent, effortless breathing throughout the dive.

MASK VARIANTS

Available in multiple variants to suit different requirements. If you need something specific, contact our sales team.



Mask Only



Mask + Side Block

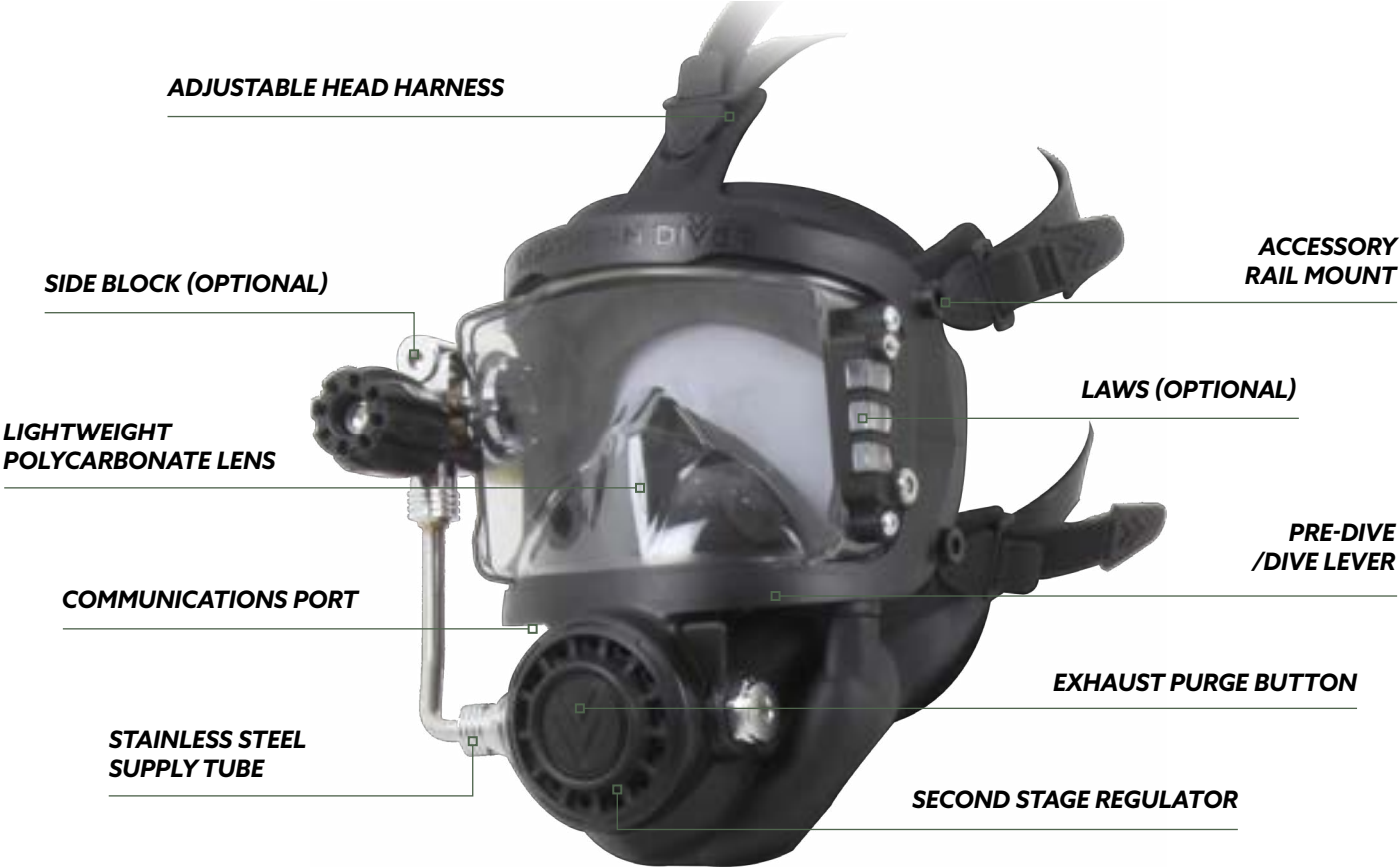


Mask + LAWS

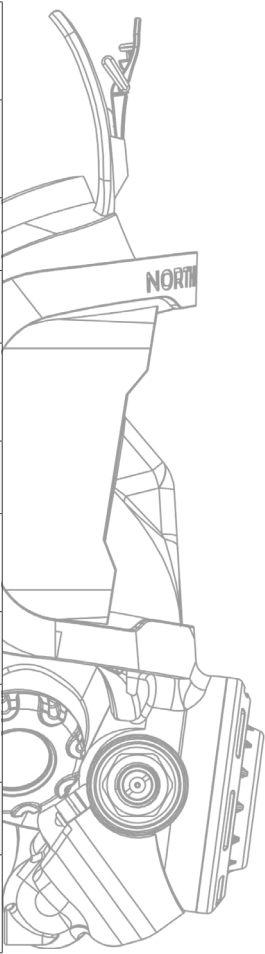


Mask + Side Block + LAWS

ODYSSEY TECH SPECS



Material	High-grade, impact-resistant polycarbonate lens for clear, durable vision.
Frame	Reinforced, high impact nylon for strength, flexibility, and comfort.
Sealing	Soft, hypo-allergenic silicone skirt for a secure, leak-proof seal.
Visibility	Wide-angle field of view with anti-fog and scratch-resistant lens.
Comms Port	Integrated port for seamless audio communication with surface teams or fellow divers.
Air Supply Tube	Stainless steel, corrosion-resistant tube for secure air delivery.
Pre-Dive / Dive Lever	Ergonomically designed lever for precise airflow and optimised breathing performance.
Weight	Lightweight, balanced design for comfort during extended wear.
Comfortable Fit	Field tested by divers of various face shapes, sizes and genders to ensure a secure fit.
Temperatures	Below 10°C and for cold water temps 4 ± 2°C (39,2 ± 3,6 °F)
Certification	Certified to EN 250:2014 and compliant with PPE Regulation 2016/425.





SIDE BLOCK

A precision-machined from a solid billet for maximum reliability. Strategically positioned for single-handed operation, it provides quick valve access—even in zero visibility—enhancing safety and efficiency on critical dives.

- Material: Precision-machined CZ121 brass with chrome finish for durability and corrosion resistance
- Weight: 2.3 kg (5 lb)
- Dimensions: 102 × 153 × 72 mm
- Depth Rating: 0-50 m (164')
- Air: Compatible with EN12021 breathable air
- Cold Water: Approved for ≤10°C; optimal at 4 ± 2°C
- Storage Temp: -10°C to +50°C
- Valve: Single-handed operation, even in zero visibility
- Seals: 316 stainless steel springs & NBR O-rings for leak-free durability
- Certification: EN 250:2014, PPE Regulation 2016/425

BAIL OUT
ID MARKER

Red marker clearly indicates when the bailout system is open for fast and clear status recognition in critical situations



LAWS - LOW AIR WARNING SYSTEM

Provides a hands-free, visual indication of remaining air pressure, enabling rapid response and safe ascent. It integrates seamlessly with the Odyssey Full-Face Mask. Mounted at the lens edge, the LED colour code is clearly visible to both diver and buddy without obstructing vision, enhancing situational awareness and confidence.

- Transmitter easily attaches to first-stage regulator
- Allows for both diver and buddy to see air supply warnings clearly
- Does not obstruct diver's forward vision
- Engineered for reliability and flawless Odyssey systemic integration
- Wireless RF design, eliminating wiring and reducing snag hazards



LAWS Transmitter
84.5 × 68.5 × 68.5 mm



ON/OFF SWITCH

RED LIGHT

Flashing at 50bar shows low main cylinder pressure.

GREEN LIGHT

Low light shows optimal battery. Green flashing light shows low battery.

WHITE LIGHT

Starts flashing at 170bar indicating bail out cylinder is in use.

CHARGING PORT

LAWS Receiver
73 × 35 × 12mm



TORCH RAIL MOUNT

A custom-designed accessory that enables hands-free securing of the Northern Diver Mini Quest Torch to the Odyssey Full Face Mask.

The low-profile mount integrates seamlessly with the mask's side rail system, offering streamlined, tactical illumination exactly where you need it.

Purpose-built for operational efficiency in low-visibility and confined space environments.



CUSTOM FFM ACCESSORIES

Northern Diver's engineering team is continually developing new accessories for the Odyssey, leveraging advanced facilities and resources to deliver custom designs quickly to meet operational requirements.

Current projects in development include a welding visor for commercial divers and integrated diver communication systems, ensuring the Odyssey platform remains adaptable, mission-ready, and at the forefront of diving technology.



Contact the
Military Sales
team for more
information
or to book a
demo day

**PRECISION FIT
UNRIVALLED
PERFORMANCE**



SERVICE TECHNICIAN TOOL & TEST KIT

To ensure performance and longevity of the Odyssey, we offer a Service Technician Tool & Test Kit designed for routine maintenance, troubleshooting, and functional testing. This kit provides the essentials for servicing the mask, helping to maintain peak performance and safety compliance; including a comprehensive set of specialised tools for disassembly, adjustment, and reassembly of key components.



SPARE PARTS

For lasting performance, a complete range of genuine spare parts is available to support routine maintenance and servicing, ensuring the Odyssey Full-Face Mask continues to deliver maximum safety, reliability, and operational readiness in all conditions.

For more Odyssey information contact our dedicated Military sales team.

What's Included?

Available in 4 standard options for various requirements, all of which include the Odyssey Full Face Mask, Black Braided-Hose Assembly, Spanner/ Communications Tool, Soft Shell Carry Case, User Manual & Document, and Packaging Box.



Scan the QR to
learn more...

DIGITAL TACTICAL SWIMBOARD

SKU ND0001380



Scan the QR to
learn more...



The high-visibility display offers both Manual and Automatic dimming modes, optimising readability in any diving environment or water condition. A dedicated Covert Mode allows the display to be completely dark while the unit continues operating in the background.

Unit size: 260*210*75mm (10.2*8.3*3")
Unit weight: 1.1kg (2.4lbs)



DISPLAY

Depth	Meters or feet
Time	Hrs, mins, secs
Compass baring	Numerical degrees, eight cardinal points
Stop watch	Mins, secs
Battery level indicator	Pictorial
Other indicators	AOA - Angle of attack

DEPTH

Max operating depth	30m
Depth accuracy	+/- 2% of actual depth
Resolution	0.1m

BATTERY

Type	Li-ion 18650 cell
Charging	wireless dock
Standby	2.5 months
Display off	100hrs
Brightness	30hrs min, 16hrs max

DATA

Storage	Max of 256 data logs + 10 hrs of data logging
Transfer	Bluetooth Wireless PC Connectivity
Logs	Export direct to Excel

NAVIGATION PLATFORM

OUR NPS IS A VERSATILE NAVIGATION SOLUTION FOR MILITARY AND PROFESSIONAL DIVERS

Our compact swim board platform houses the SUUNTO SK8 – the world's most popular, highly accurate dive compass – with a backlight for underwater visibility and five colour options. Optional accessories include an analogue depth gauge, CASIO G-Shock, or a digital depth gauge showing current and max depth, dive time, and over-depth alerts. A simple lanyard is included, and the board comes in a compact storage case.

PLATFORM

Board L*W*H: 11*5.5*1.6" (13.5*28*4cm)
Weight (platform) in air: 0.57lbs (0.26kg)
Board material: black acetyl
Compass illumination: LED light stick

NSP COMPASS* - SK-8 (Suunto)

Compass card bearings: 5° markings, black with luminous bearing marks
Compass card tilt: 20°
Size: 2.4" Dia (6cm), 1.6" H (4cm)
Back light: red, white, blue, yellow and green
Operation: press on/off
Easy replaceable

ANALOG DEPTH GAUGE

Metric model: 0 to 25m
Max depth marker: resettable tell-tale
Face: black with luminous white numerals
Certification: EN 13319

DIVE CHRONOMETER

Casio G-Shock GAW-100B-1AER watch
Stop watch, LED analogue display
Date and time

ND DIGITAL DEPTH GAUGE

Displays: current depth, max depth, exceeded max depth, dive duration 0-100m



NPS 1



NPS 2



NPS 3

SKU NPS2-MANUF-BOARD



Scan the QR to
learn more...

NPS 1 Nav board, compass, flexi-light illuminator

NPS 2 Nav board, compass, flexi-light illuminator, analog depth gauge and dive chronometer

NPS 3 Nav board, compass, flexi-light illuminator, digital depth gauge and dive chronometer

DIGITAL DEPTH GAUGE

SKU ND0000628



Dive records
transferable via PC*

The Digital Depth Gauge is a rugged, wrist-worn dive instrument with a low-profile design that won't interfere with kit and a clear, reliable display. As an optional extra our docking station enables settings adjustment and dive log transfer via USB to PC software.

- **Max Op. Depth:** 100m
- **Depth Accuracy:** $\pm 2\%$ actual depth
- **Depth Resolution:** 0.1m
- **Time Accuracy:** -2 sec per day
- **Maximum Dive Duration:** 5 hours
- **Stored Dive History:** 20 data sets
- **Dive Data Download:** Optical serial via front panel
- **Display:** 40 x 30mm (1.6 x 1.2") white colour dot matrix OLED
- **Power:** Non-charge Lithium Battery
- **Brightness Full Display:** 20 hours cont.
- **Dimmed Display:** 30 hours cont.
- **Display Off:** 100 hours cont.
- **Switch:-**
Manual - Default; Dim / Brightness;
Auto power-off; Saves record of the dive

EN 133319:2002 | CONFORMS WITH 2001/95/EC

COMBAT SWIMBOARDS

TAC-100

The TAC-100 Underwater Navigation Swim Board features a lightweight, impact-resistant console with easy-grip handles and the TAC100-2 compass. The compass has a black luminous card with degree markings, internal lubber lines for direction, and an adjustable chemlight holder for night operations.



The unit includes an analogue depth gauge (0-60 m) and can be fitted with additional instruments such as a digital depth gauge, analogue depth gauge, dive chronometer, or Casio G-Shock with lap timer.
NSN 1560-99-386-7048

TAC-300

The TAC-300, designed by combat swimmers, is smaller and lighter than the TAC-100. It combines the BENS C1150 compass with V-Lite illumination and the DG100 depth gauge/timer, all mounted on a rugged ABS board.

It integrates the digital depth gauge (0-100 m range, rechargeable lithium battery with 35-hour charge and 300-cycle life) and a compass with 10° bearings, V-Lite illumination (up to 8 hrs), 40° tilt, and a 70 m depth rating.

Additional instruments include the depth gauge/timer, dive chronometer, and Casio G-Shock watch with lap timer.



FLEXI-LIGHTS



5 Colour
Variants



Multicolour
Version



Infrared
Version



**THE MODERN ALTERNATIVE
TO CHEMICAL GLOW STICKS,
DEVELOPED FOR MILITARY AND
SPECIAL FORCES**

Used to identify troops on the ground or helicopters overhead. Developed as an eco-friendly, controllable alternative to chemical glow sticks, giving the user full control over when it is on or off. Replacing chemical glow sticks with reusable Flexi-lights offers significant cost savings.

SPECIFICATIONS

- Output: 8 lumens
- Depth: tested to 100m
- Visible distance: up to 3000m
- Flexible, waterproof silicone body
- RoHS compliant polyurethane
- Battery: non-replaceable, up to 42 hours
- Operation: on/off sliding switch
- Colours: red, green, white, yellow, blue,
- Other options: multicolour or infrared
- L*W*H: 110*25*20mm

USES

- Markers for equipment or personnel
- Effective distress aids
- Location beacons
- Path markers
- Position highlighters
- Ideal life jacket marker
- Perimeter protection or hazard warning

LIGHT MODES

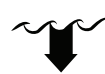
- Low power 40hrs burn time (standard)
- High power 20hrs burn time (standard)
- Flash 42hrs burn time (standard & multi)



Velcro patches | Use multiples for colour coded communication and signalling, over 3km distance or up to 100m underwater.



Brightness
8 Lumens



Depth Tested
100m



Waterproof
Construction



Flexible Silicone
Body



Visible up to
3 km away



RoHS
Compliant
Polyurethane



CE Product
Approved



EC/EN 62471
EN 61547 | EN55015



O₂ & NITROX / HELIOX

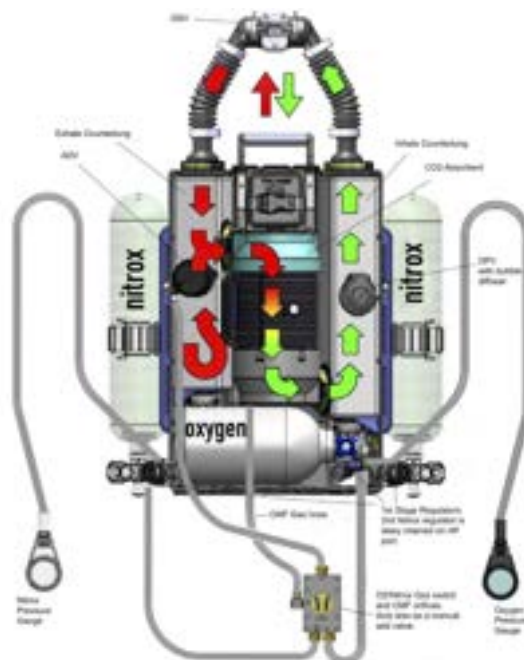
INCURSION REBREATHERS

**Combined Mode Military Rebreather
O₂-CCR, Nitrox SCR & Switched
CE, NORSOK & NEDU Standards compliant**



USES

Shallow & Deep Mine counter measures (MCM) Nitrox/Heliox
Underwater intervention rescue
Fleet maintenance
Hull inspections



INCURSION CMR

**CHEST-MOUNTED MULTI-MODE
REBREATHER FOR DIVES TO 60M**

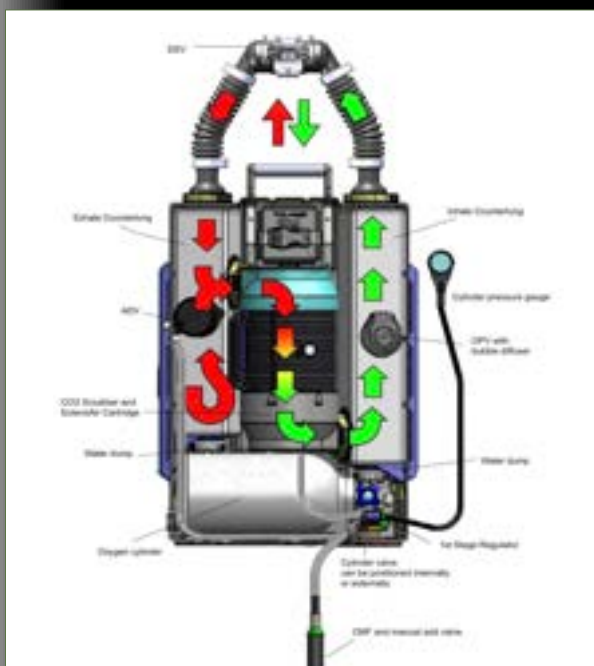
Military rebreather providing O₂ near the surface and Nitrox or Heliox SCR for deeper dives. Front-mounted rigid case with integral rails for diver egress, low-profile with minimal drag on high-speed delivery vehicles, fully flood-recoverable.

Features Micropore ExtendAir CO₂ scrubber, 4+ hour duration, industry-low work of breathing (0.35-1.44 J/L depending on depth/gas), and integrates with OTS via through-water comms. Weight 13.4 kg (O₂) or 17.8 kg (Nitrox), switchable between O₂, Nitrox, or Heliox.

To download the incursion rebreather brochure, scan the QR code to visit our web catalogue. Or get in touch with our military sales team.

MORE INFO

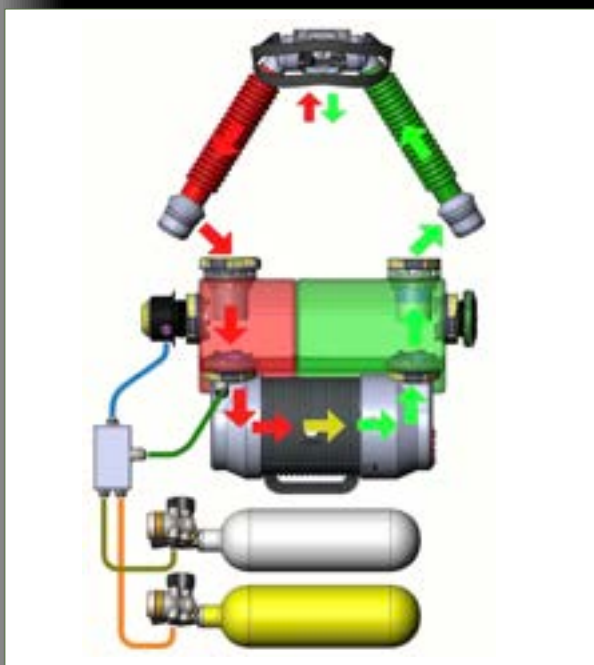




INCURSION BOX CCR

BACK MOUNTED OXYGEN CLOSED
CIRCUIT REBREATHER

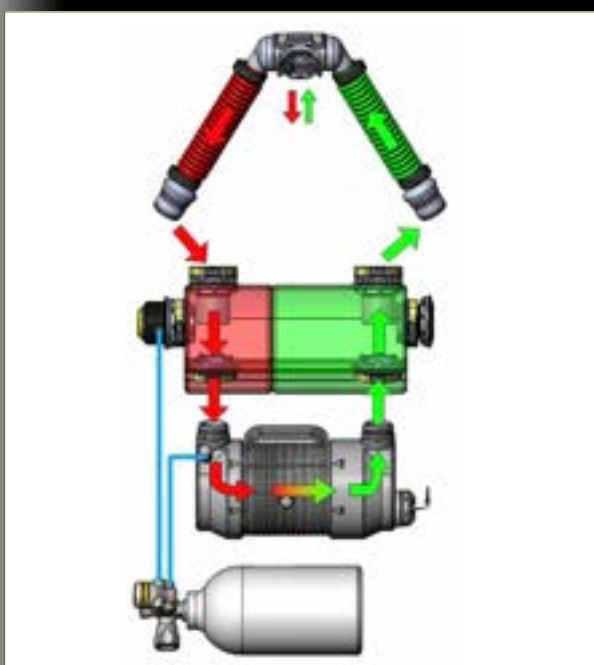
Military back-mounted oxygen rebreather in a rigid case with integral rails for diver egress. Low-profile design minimises drag on high-speed delivery vehicles and is fully flood-recoverable. Features a Micropore ExtendAir CO₂ scrubber, 4+ hour duration, industry-low work of breathing (0.35 J/L at 10 m, 62.5 lpm RMV), weighs 13 kg ready to dive (8.4 kg without trim weight/EAC), and integrates with OTS via through-water communications.



INCURSION CMR O₂

COMBINED (FRONT OR BACK MOUNTABLE)
MULTI-MODE O₂ CLOSED-CIRCUIT AND
SEMI-CLOSED REBREATHER

Military rebreather providing O₂ near the surface and Nitrox/Trimix for dives to 60 m. Compact satchel (50 × 39.5 × 16 cm) with breathing hoses and 2 cylinders, clip-on front or back to tactical jacket or buoyancy aid. Fully flood-recoverable, with Micropore ExtendAir CO₂ scrubber, 4+ hour duration, and industry-low work of breathing (0.35–1.44 J/L depending on depth and gas). ISO 9000/IEC EN 61508 SIL 3 certified. Weight 10.4–17.4 kg, integrates with OTS via through-water communications.



INCURSION BOX COR

COMBINED (FRONT OR BACK MOUNTABLE)
O₂ CLOSED-CIRCUIT REBREATHER

Military oxygen rebreather, field-upgradeable to Nitrox SCR or Nitrox/Trimix eCCR. Compact satchel (39.5 × 36 × 16 cm) with O₂ cylinder, clip-on front or back to tactical jacket or buoyancy aid. Fully flood-recoverable, with Micropore ExtendAir CO₂ scrubber, 4+ hour duration, and lowest work of breathing. ISO 9000/IEC EN 61508 SIL 3 certified. Weight 8.4–13.5 kg depending on configuration, integrates with OTS via through-water communications.

ASSET RECOVERY

SKU ND0003904

The ARION is a compact, robust device designed for military diving operations and equipment recovery. Easily mounted to a diver or high-value asset, the system automatically deploys a high-visibility, lined buoy once a pre-set depth threshold is exceeded. Multiple sizes are available.

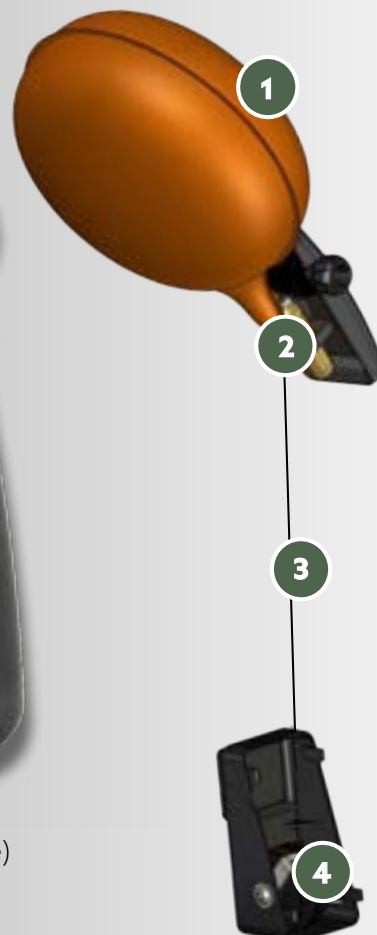
This rapid, reliable deployment aids in the immediate identification of lost personnel or equipment and serves as a critical tool in training environments to signal when a diver has descended beyond safe or designated limits. Engineered for operational reliability in demanding underwater conditions, the ARION enhances both safety and asset recovery in real-time.



MOLLE Compatible
(clips included)



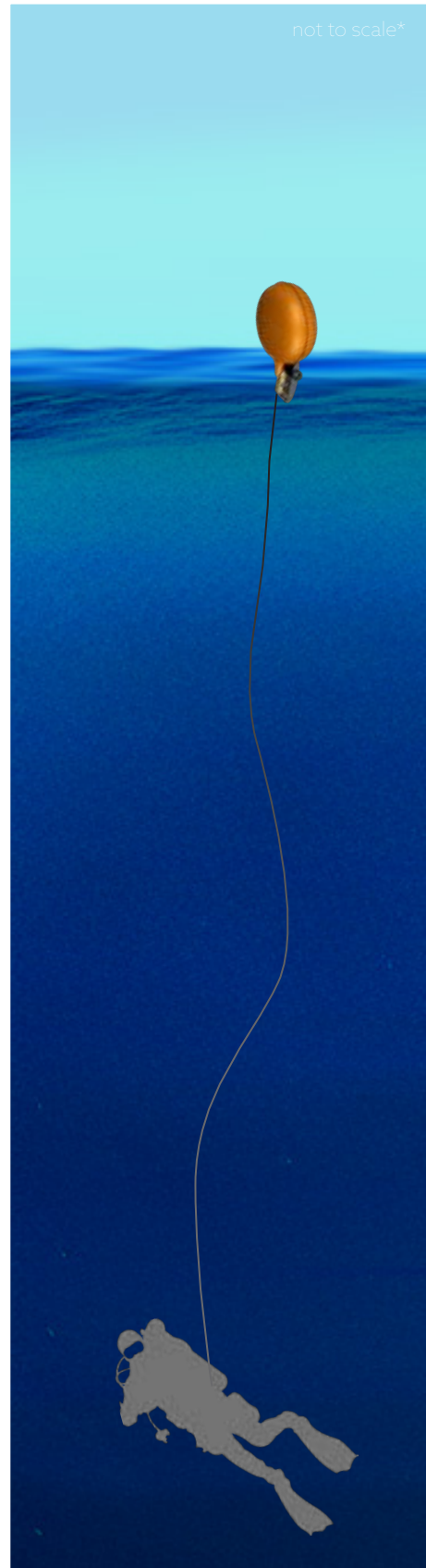
Highly Visible Buoy
(colour options available)



- 1 - High Visibility Buoy (water-activated light beacon available)
- 2 - 16g CO₂ Cartridge (replaceable)
- 3 - High-strength Nylon Line
- 4 - Reel (adjustable lengths available from 15 to 50m)



Dimensions	80*160*90mm
Weight	350g / 0.77lbs
Depth Settings	7 - 50m (adjustable)
Reel Lengths	10 - 50m (adjustable)
CO2 Cartridge	16g (replaceable)
Buoy Diameter	350mm



Reusable & Adjustable

ARION's reusable system only requires a replacement CO2 inflation cartridge in order to be back in action for its next deployment. The depth setting can be reset by Northern Diver, as can the reel, making each ARION multi-functional and multi-depth operational.



Scan the QR to
learn more...

HEATED DIVE GLOVES

NSN 4220-99-684-5432 (L)

Hands are often the first to suffer in extreme cold, with blood vessel contraction leading to numbness, loss of dexterity, and in severe cases, frostbite. Cold, incapacitated hands can compromise comfort, safety, and equipment handling.

HydroTherm Heated Gloves provide rapid, consistent warmth with heating elements that cover the entire back of the hand and fingertips, ensuring full hand protection and operational performance in low temperatures.

SIZES

S, M, L, XL, XXL

Gloves are also available in a 2mm version and a shorter style for use with our Dry Glove Ring system.




Temperature
35°C (average)


Battery
90 minutes

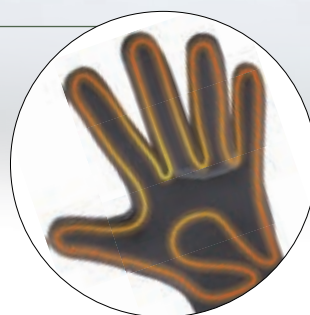
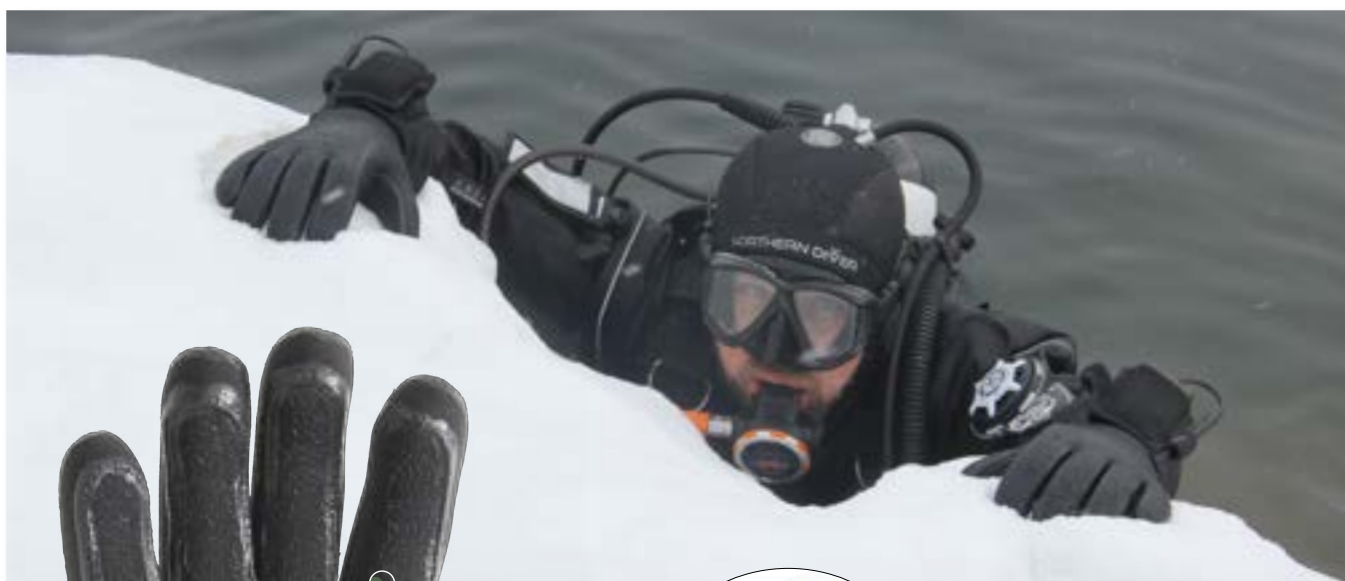

Recharge
3 hours


Depth
100m (332')


Magnetic
Touch On/Off



Wet mateable connector allows for safe underwater connection.



WHOLE-HAND WARMTH

The heating elements cover the entire back of the hand and fingertips, ensuring the whole hand stays warm, even when cold, wet, and/or submerged.

FEATURES & SPECIFICATIONS

- 4.0mm flexible super-stretch neoprene
- Close comfort fit for optimal dexterity
- Liquid taped, stitched seams and waterproofing
- Silicone overprinted textured palms
- Enhanced grip and handling
- Integrated battery pouch
- Built-in heating elements
- Internal seal ring to retain heat/block water ingress
- Internal thermal lining for added insulation
- Magnetic operational technology for ease of use
- Compliant with LVD Directive (2014/35/EU)
- Rated to 100m depth
- Powered by 7.4V 2200mAh Lithium-Ion batteries
- 90 minutes use per 180 minutes charge
- Heating output: 35°C | 95°F
- Operating temp: -10°C to +50°C (14°F to 122°F)
- Storage temp: -20°C to +60°C (-4°F to 140°F)

What's Included?

Each HydroTherm Heated Glove set is supplied complete with a pair of neoprene gloves, two rechargeable batteries and battery chargers, a durable zipped storage case, and a user manual for ease of use and care.



Scan the QR to
learn more...

HEATED DIVE SOCKS

NSN 4220-99-684-5432 (L)

Feet are as susceptible to the chill as the hands and fingers, and are one of—if not the first—parts of the body to suffer in low temperatures. When cold and numb they can cause discomfort, but this can quickly escalate into blood vessel restrictions, and even frostbite. Northern Diver's rechargeable heated socks are the solution, with heating elements encompassing the entire foot to maintain body temperature and keep your feet safe, warm and dry.



The heating elements are distributed over the top of the foot for optimal even warmth

FEATURES

- 4.0mm flexible superstretch neoprene
- Close comfort fit = optimal dexterity
- Liquid taped, stitched seams
- Additional leg band mounting option
- Battery pouch
- Built-in evenly distributed heating elements
- Internal seal ring keeps warmth in, and water out
- Internal thermal lining
- Magnetic operational technology
- LVD Directive (2014/35/EU)



Designed to maintain skin temperature above 12°C in 5°C water for over 30mins, with heating elements regulated at 35°C

HALO

HEATED GLOVES

Purpose-built for high-altitude, low-opening (HALO) operations, this glove combines advanced materials with integrated heating technology for maximum performance in extreme conditions.



Depth Rating	up to 100m
Battery Output	7.4 volt 2200mAh Lithium Ion
Battery Weight	150g (0.3lbs) per battery
Battery Life	90 mins use per 180 mins charge
Av. Temperature	35°C 95°F
Operating Temp.	-10°C to +50°C 14°F to 122°F
Storage Temp.	-20°C to +60°C -4°F to 140°F
Materials	Suede, waffle fleece, eoprene



FEATURES

Crafted from Amara and flexible neoprene with thermal fleece lining for insulation, wind resistance, and a secure fit.

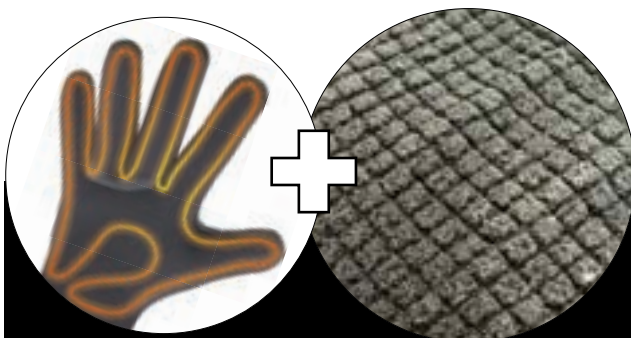
Side-zip design for quick donning and doffing, even in freezing conditions.

Integrated heating system with waterproof connectors and rechargeable lithium-ion battery in a low-profile pouch.

Touchscreen-compatible fingertips and magnetic on/off activation for effortless use in the field.

Provides warmth, dexterity, and durability from free-fall to ground operations.

Sizes: M, L, XL, XXL



The Halo Gloves combine the classic heating element across the inside backing of the glove with waffle-fleece to keep your fingers and hands at the ideal working temperature.



DRYSUITS & SURFACE APPAREL

040	CLEARANCE DIVER DRYsuit MCM ROLE
041	NEOPRENE DRYsuit - MULTI ROLE USE
042	SPECIAL FORCES DRYsuit
043	COMBAT SWIMMERS DRYsuit
044	SALMO SALVAGE & MOORINGS DRYsuit
045	SPECIAL OPS LONG DURATION SUIT
046	DEFENCE DIVER TRAINING SUIT
047	SWIMMER OF THE WATCH MAN OVERBOARD DRYsuit
048	BOATING OPERATIONS SUITS
053	STORMFORCE - RESCUE SUIT
054	THOR CONTAMINATED RUBBER DRYsuit
056	HOT WATER SATURATION DIVING SUIT



CLEARANCE DIVER

MCM ROLE

THIS DRYSUIT DESIGN HAS BEEN PROVIDED TO THE ROYAL NAVY OVER THE LAST 15 YEARS AND USED BY OUR SPECIALIST MCM DIVE TEAMS.

The drysuit is completely Non-Magnetic and used against ordinance for search and detonation tasks. The suit is used operationally in both deep and shallow water in arctic and temperate conditions. Compatible for use with Re-Breathers and Air Diving Sets.

SPECIFICATION

- 4mm neoprene
- Triple glued, blind stitched seams
- Front or rear entry options
- Non magnetic heavy duty 6 pitch BDM suit zip and fly zip
- Zips fitted with protective zip covers
- Non magnetic low profile valves
- Neoprene neck seal
- Latex wrist seals
- Overprinted Kevlar® knee protection
- Knife pocket (right thigh)
- Zipped transporter pocket (left thigh)
- Torch pocket (right forearm)
- Durable hard sole boots

SIZES

S, M, ML, MLR, MR, MLT, L, LR, LT, XL, XLR, XLT, XXL, XXLR & MTM

We can design and manufacture non-magnetic drysuits to your required specification.

Contact the Military sales teams to discuss your options today.



Scan the QR to learn more...

NSN 4220-99-594-2414 (S)



NEOPRENE DRYSUIT

MULTI-ROLE USE

FOR ROLES SUCH AS UNDERWATER ENGINEERING, DEMOLITION, FAST OPEN WATER SEARCHES, HULL SEARCH RECOVERY AND DEEP DIVING

This Multi Role Drysuit has been provided to The Royal Navy for over 15 years and is our most widely used drysuit in the UK. Issued to Divers of the Royal Navy, Army and Marines.

SPECIFICATION

- 4mm Neoprene
- Triple glued, blind stitched seams
- External polymer protects stitching
- Front or rear entry options
- Non magnetic heavy duty 6 pitch BDM suit zip and fly zip
- Zips fitted with protective zip covers
- Non magnetic low profile valves
- Neoprene neck seal, latex wrist seals
- Overprinted Kevlar® knee protection
- Knife pocket (right thigh)
- Zipped transporter pocket (left thigh)
- Torch pocket (right forearm)
- Durable hard sole boots

SIZES

S, M, ML, MLR, MR, MLT, L, LR, LT, XL, XLR, XLT, XXL, XXLR & MTM

We can design and manufacture Multi Role Tri-laminate Drysuits to your required specification.

Contact the Military sales teams to discuss your options today.



Scan the QR to
learn more...



SPECIAL FORCES

MISSION-READY DRYSUIT

PURPOSE-BUILT FOR SPECIAL FORCES, THIS DRYSUIT SETS THE STANDARD IN TACTICAL WATER-PROOF PERFORMANCE.

SPECIFICATION

- 320D fully breathable fabric
- Triple glued / fully internal taped seams
- YKK Aquaseal plastic waterproof zip
- Rear entry drysuit
- YKK Aquaseal plastic fly zip with protective cover
- Latex cuffs, neck and socks
- Integral Kevlar knee pads
- Kevlar elbow and seat pads
- Zipped ankle gaiters - inner leg zip
- Velcro closure cuff gaiters
- Various pocket options and molle panels available

SIZES

S, M, ML, L, XL & XXL



Scan the QR to
learn more...

NSN 4220-99-668-6117 (L)



COMBAT SWIMMERS

SUPPLIED TO SPECIAL OPS WORLDWIDE

**THE LIGHTWEIGHT AND
VERSATILE DESIGN ALLOWS
COMBAT SWIMMERS TO DRESS
AND UNDRESS INDEPENDENTLY
AND QUICKLY.**

SPECIFICATION

- 320D fully breathable fabric or a 450D tri-laminate fabric
- Triple glued, blind stitched seams
- Non magnetic medium duty 8 pitch BDM zip or YKK® Aquaseal® plastic zip available
- (suit and fly zips) fitted with protective cover (Velcro closure)
- Non magnetic low profile valves
- Neoprene or latex neck seal
- Neoprene or latex wrist seals
- Optional cuff protectors/warmers
- Adjustable elasticated inner braces
- Double layer or Kevlar® knee and seat
- Latex socks with neoprene warmers

SIZES

S, M, ML, MLR, MR, MLT, L, LR, LT, XL, XLR, XLT, XXL, XXLR & MTM



Scan the QR to
learn more...



SALVAGE & MOORINGS

(SALMO)



WE ARE PROUD TO PROVIDE OUR FLAGSHIP COMMERCIAL DRYSUIT - THE DIVEMASTER TO THE UK'S MILITARY SALVAGE & MOORINGS TEAM, SALMO.

The suit is used by SALMO to conduct the heaviest Salvage and Commercial grade diving tasks; including underwater engineering, welding, cutting hull cleaning, inspection and pipeline works. The Divemaster is chosen by many military and government organizations worldwide for Salvage Diving and training purposes. The suits can also be provided for use with Surface Supplied Equipment.

SPECIFICATION

- 5.5mm Neoprene
- Triple glued, blind stitched, liquid taped seams
- Rear entry heavy duty 6 pitch BDM suit zip
- Zip fitted with protective zip cover
- Non magnetic low profile valves
- Neoprene neck seal and wrist seals
- Velcro close bellows pocket (right thigh)
- Zipped transporter pocket (left thigh)
- Rugged shoulders, Kevlar® knee and overprinted seat areas
- Durable hard sole boots

SIZES

S, M, ML, MLR, MLT, MR, L, LR, LT, XL, XLR, XLT, XXL, XXLR, XXLT, XXXL, XXXLR & MTM

Various Neck Yokes and Dry Glove Systems are available for configuration with the Divemaster; speak to a member of our Military Sales team for more information

Contact the Military sales teams to discuss your options today.



Scan the QR to learn more...



LONG DURATION

FOR SPECIAL OPERATIONS

DESIGNED FOR ENDURANCE, THE LONG DURATION DRYSUIT OFFERS MAXIMUM COMFORT AND PROTECTION DURING EXTENDED OPERATIONS IN DEMANDING ENVIRONMENTS.

Its 6mm compressed neoprene, reinforced seams, Kevlar® knees, and durable boots ensure resilience, while non-magnetic components and practical pocket placement make it mission-ready for military divers.

SPECIFICATION

- 6mm compressed neoprene
- Triple glued, blind stitched and liquid/cell Neoprene taped seams
- 6mm Neoprene attached hood
- Medium duty BDM non magnetic zip
- Horse-shoe entry style
- Non magnetic low profile valves
- Latex neck seal
- Latex wrist seals with warmers
- Adjustable elasticated inner braces
- Zipped transporter pocket (right thigh)
- Velcro close bellows pocket (left thigh)
- Kevlar® knee protection
- Durable hard sole boots

SIZES

MTM - This suit is made to measure to your exact requirements - ensuring optimum fit.

This drysuit design is available in neoprene or Tri-Laminate materials.

Contact the Military sales teams to discuss your options today.



Scan the QR to learn more...



DEFENCE DIVER TRAINING

USED BY ROYAL NAVY'S DEFENCE DIVING SCHOOL

THIS NAVAL RECRUIT TRI-LAMINATE DRYSUIT IS PROVIDED TO THE RECRUITS OF THE PRESTIGIOUS ROYAL NAVY'S DEFENCE DIVING SCHOOL

The new recruits undergo their initial diver training courses using this Heavy-Duty Tri-Laminate Drysuit. The training includes long distance swims, mud runs, entering water from height, deep diving and continuous use lasting a 3-month course.

SPECIFICATION

- 450D Cortex fabric
- Triple glued, blind stitched seams
- Rear entry style
- Non magnetic heavy duty 6 pitch BDM suit zip and fly zip
- Zips fitted with protective zip covers
- Non magnetic low profile valves (optional)
- Overprinted shoulder protection
- Neoprene neck seal
- Latex wrist seals with warmers
- Overprinted Kevlar® knee protection
- Velcro close bellows pocket (right thigh)
- Zipped transporter pocket (left thigh)
- Durable hard sole boots

SIZES

S, M, ML, L, XL, XXL & MTM

We can design and manufacture non-magnetic drysuits to your required specification.

Contact the Military sales teams to discuss your options today.



Scan the QR to learn more...



NSN 4220-99-348-9873



SWIMMER OF THE WATCH

MAN OVERBOARD RECOVERY DRYSUIT

THIS HIGHLY VISIBLE DRYSUIT IS ISSUED TO THE SWIMMER OF THE WATCH ON-BOARD SHIPS; WHOS ROLE IS TO PROVIDE ASSISTANCE IN THE EVENT OF AN IN-WATER EMERGENCY SITUATION

SPECIFICATION

- 4mm high visibility Neoprene
- Triple glued, blind stitched & liquid taped seams
- Neoprene neck & wrist seals
- Medium duty BDM dry zip fitted with protective cover (Velcro closure)
- Reflective printed banding on the shoulders, arms & legs
- Kevlar® elbow protection
- Adjustable elasticated inner braces
- Kevlar® knee protection
- Durable hard sole boots

SIZES

S, M, ML, L & MTM

We can design and manufacture Multi Role Tri-laminate Drysuits to your required specification.

Contact the Military sales teams to discuss your options today.



Scan the QR to learn more...

SKU BOATING-OPS-MTM



ONE-PIECE BOATING OPS

BREATHABLE AND FIRE RETARDANT

SPECIFICALLY DESIGNED FOR MOD AND POLICE TEAMS WORLDWIDE, THIS DRYSUIT—ALSO KNOWN AS AN IMMERSION SUIT—IS USED IN THE UK AND INTERNATIONALLY FOR BOATING OPERATIONS. IT IS NOT INTENDED FOR DIVING BUT ENSURES THE WEARER REMAINS DRY.

SPECIFICATION

- 450D NOMEX® (fire retardant fabric) or
- 320D breathable fabric
- Triple glued, blind stitched seams
- Front entry
- YKK® Aquaseal® plastic dry zip
- Neoprene or latex neck seal
- Fleece-lined Velcro closing collar with fold away high vis hood
- Neoprene or latex wrist seals
- Cuff protectors (Velcro adjustment)
- Small Velcro closing bellows pockets & zipped fully dry pockets (both arms)
- Adjustable elasticated inner braces
- Velcro badges (arms & chest)
- YKK® Aquaseal® plastic fly zip fitted with a protective cover (Velcro closing)
- Velcro close bellows pockets (legs)
- Kevlar® knee & seat protection
- Ankle protectors (Velcro & zip closure)
- Breathable tri-laminate socks

SIZES

MTM only



Scan the QR to
learn more...

SKU MOD-FRISBOB-MTP



FRISBOB BOATING OPS

FIRE RETARDANT BOATING OPS IMMERSION SUIT

THE UNIQUE DESIGN ENABLES THE USER TO WEAR THE SUIT OVER FULL COMBAT DRESS, MANUFACTURED WITH AN EXTRA LARGE FOOT POCKET TO FIT OVER BOOTS.

SPECIFICATION

- Medium weight fire retardant fabric
- Triple glued, blind stitched seams
- Front entry suit style
- YKK® Aquaseal® plastic dry & fly zips with protective covers (Velcro close)
- MTP neoprene neck & wrist seals
- Cuff protectors (Velcro adjustment)
- Adjustable elasticated inner braces
- Strobe/lighting pouch (left forearm)
- Radio pocket (right shoulder)
- Velcro close bellows pockets (front of legs), open windows allow for removable writing slates or maps
- Adjustable crotch strap
- Stretch leg gaiters with YKK® zip closure designed to quickly burst open if required
- Bungee lace up over boot with zip closing MTP cover

SIZES

S, M, L, XL, XXL & MTM



Scan the QR to
learn more...

SKU BO-2PC-K



TWO-PIECE BOATING OPS

LIGHTWEIGHT, BREATHABLE FABRIC

THE SUIT COMPRISES OF 'LONG JOHN' STYLE BOTTOMS, STRETCH NEOPRENE SOCKS, OVER GAITERS FOR USE WITH SEPERATE BOOTS, ALONG WITH AN OVER JACKET (CAG).

JACKET

- 320D fully breathable fabric
- Triple glued / fully taped internal seams
- YKK® zips on front intergral pockets
- Pockets fully waterproof
- Fleece lined hood, collar and pockets
- Integral Kevlar® elbow pads
- Velcro closing cuff gaiters
- Internal elastic adjusters
- Internal neoprene waist panel
- Yamamoto cuff seals

WADERS

- 320D fully breathable fabric
- Triple glued / fully taped internal seams
- YKK® Aquaseal® zips on pockets
- Fully waterproof pockets
- Integral Kevlar® seat pad and kneepads
- Adjustable elasticated braces
- Neoprene/melco trim socks
- Elasticated ankle gaiters
- Internal elasticated adjusters
- Adjustable webbing belt at waist



Scan the QR to
learn more...



JACKET SIZES

S, M, ML, L, XL & XXL



WADER SIZES

S, M, ML, L, XL & XXL

WE DESIGN AND MANUFACTURE



We can design and manufacture any military training drysuit to suit your required specification

WE CAN DESIGN SUITS TO SPECIFIC REQUIREMENTS

Neoprene or latex seals
Pocket options and configurations
Zip options and positions
Boots and sock options
(including steel toe and latex socks)
Various dry glove systems available

All our suits can be available in various fabrics, thicknesses (neoprene) and colours including camouflage patterns

SKU BO-2PC-MTP



TWO-PIECE BOATING OPS

CAMO VARIANT

SUITABLE FOR USE IN CANOES, KAYAKS, LIGHT CRAFT, SMALL RIBS AND SIMILAR. AVAILABLE IN MTP/CAMO BLACK & LAKE GREEN

SPECIFICATION

MTP lightweight breathable fabric
Triple glued, blind stitched seams

CAG OVER JACKET

Neoprene neck seal
Fleece-lined collar (Velcro close)
Light stick pocket (both shoulders)
Neoprene wrist seals
Adjustable neoprene waistband

SALOPETTES

Adjustable elastic braces with quick release buckles
Splash proof front entry zip with Velcro securing tab
Adjustable waist belt
Zipped chest pockets (2)
MTP neoprene socks & warmers

SIZES

S, M, L, XL, XXL & MTM



Scan the QR to
learn more...

SKU F5-375D-FE

STORM FORCE 5 RESCUE SUIT

FULLY CUSTOMISABLE DRY SUIT

THE STORM FORCE 5 IS THE PINNACLE OF DURABLE DRY SUIT TECHNOLOGY, CRAFTED FROM ROBUST 375D TRI-LAMINATE MATERIAL.

Evolving from the popular Storm Force 4 design, this upgraded suit is designed for rescue and emergency response teams tackling swift water rescues, flood scenarios, or extreme offshore conditions.

SPECIFICATION

Fabric build: 375D heavy duty tri-laminate
Front entry BDM metal dry zip (medium duty)
Yamamoto neoprene neck and wrist seals (latex shown)
Reflective strips
1x Flexi-Light stick arm pocket
1x bellows pocket (Velcro closure)
Double layer knee/seat protection
Elasticated ankle gaiters

SIZES

S, M, ML, L, XL, XXL, XXXL (UNISEX)

**STORM
FORCE 5**



Scan the QR to
learn more...

SKU 1600G-THOR

THOR

CONTAMINATED WATER RUBBER DRYSUIT



AN EXCELLENT OPTION FOR MILITARY AND RESCUE PURPOSES. OUR THOR DRYSUIT IS MANUFACTURED FROM A VULCANISED POLYMER CREATED FROM A MIX OF HIGH-GRADE RUBBER AND EPDM

Vulcanised laminated polymers are carried on a multi-directional 4-way-stretch knitted polyester, which gives excellent strength and durability.

AVAILABLE IN 1600G

The best suit for extremely dangerous scenarios where there is chemicals it is essential to protect users from exposure

CE approved, conforms to latest EEC PPE directive. BS EN ISO 9001:2008.

SPECIFICATION

Vulcanised laminated polymer sheets, polyester, high-grade rubber and EPDM which gives excellent strength, protection & durability
Bonded for life seams
Rear entry style suit
Heavy duty BDM dry zip
Commercial grade valves
Latex neck & wrist seals
Reflective banding (upper arms)
1600G suit supplied with safety boots

SIZES

S, M, L, XL, XXL



Scan the QR to learn more...

USES

Toxic incidents, chemical diving environments, contaminated waters and toxic body recovery.



BOOT OPTIONS

A choice of rubber or safety boots can be fitted to your Thor rubber drysuit.

Available in sizes: UK 7-12

Safety boots (all red colour) steel toe cap and mid-sole foil conforms to the EN 12568/98 safety footwear standard



NECK YOKE OPTIONS

The Thor range of rubber drysuits is compatible with the industry standard diving helmet neck yokes, including Desco, KMB, AH & Genesis models



CUFF RING SYSTEMS

User replaceable, lock in, wrist seals or glove system. The system, which offers excellent resistance to abrasion, acids, alkalis, cutting oils and petrol, enables the user to easily swap the seals/gloves for new ones when required.

The system includes a pair of cuff seals or gloves, cuff rings & sealing o-rings. Use of this system requires the removal of your drysuits seals.

Sizes: M, L, XL



@southerndivers38



@harcanmarine

SKU HWS1899

hotwater[®]

EVOLUTION 8

SATURATION DIVING HOT WATER SUIT

OUR HOTWATER SUITS HAVE BEEN PROVIDED TO THE SUB-SEA COMMERCIAL MARKETS WORLDWIDE FOR OVER 30 YEARS

SPECIFICATION

4mm anti-shrink neoprene
Anodised aluminium water distribution valve with 360° stainless steel quick connector
Anti-kink flat rubber pipe system
Diver controlled flow rate
10mm chest eyelet opening (inc pipe & plug) for face plate clearing
All eyelets are 316 marine grade stainless steel
Removable chest ID badge
Front entry YKK® plastic zip
Fleece lined collar (Velcro closure)
Removable SOLAS tape (upper arms)
Loop Velcro panels on cuffs, compatible with Hotwater Suit Gloves gloves
Double layer neoprene pads with protective overprint on shoulder, elbow & knee areas
Easy access pockets (both legs)
Zipped ankle closure with loop Velcro panels, compatible with Hotwater Suit Boots boots
Tested to BS EN 14225-3:2017

SIZES

S, M, ML, MT, L, LT, XL, XLT, XXL, XXLT, XXXL



Scan the QR to
learn more...





HOT CRABBER GLOVES

Cut resistant, hard wearing glove
Designed for use with hotwater system
Excellent abrasion, chemicals, acids, alkalis,
cutting oils & petrol resistance
Coloured over-dip acts as a wear indicator
Sizes: M, L, XL



GAUNLET KEVLAR® GLOVES

5.0mm neoprene
Reinforced Kevlar® palm and finger tips
Plush inner lining
Liquid taping/overprinted panels on finger tips
50*50mm (2*2") hook Velcro panel fitted inside
Sizes: M, L, XL, XXL



HOTWATER BOOTS

5.0mm neoprene
Drain holes on inner side of boots
50*50mm (2*2") hook velcro panels fitted inside
Flexible rubber sole
Sizes, S (UK 7-8), M (UK 9-10) L (UK 10-11), XL (UK 11-12) XXL (UK 12-13)





METALUX

THERMALS & WETSUIT SYSTEMS

060	UNDERSUIT SYSTEMS
062	TECHNICAL BASE LAYERS
063	ELECTRACORE HEATED VEST
064	WATERPROOF CHANGING ROBE
065	RASH GUARDS AND THERMAL SOCKS
066	SEMI-DRY WETSUIT
067	TROPICAL/TEMPERATE WETSUIT
068	CAMO/MTP WETSUIT
069	REAR ENTRY WETSUIT
070	BEAVERTAIL WETSUIT
071	FRONT ENTRY WETSUIT
072	RESCUE WETSUITS

METALUX

100G, 200G AND 300G OPTIONS AVAILABLE

NSN 4220-99-917-0195 (L)



SPECIFICATION

- Lightweight & fleece-lined
- Quick-drying design
- Bacteria and fungus resistant
- Thermalskin cuffs/foot stirrups
- Zipped chest pocket, Pockets on hips
- Elastic foot stirrups
- Two way YKK® zip
- Non magnetic rubber zip pullers
- Sizes: S, M, ML, MLR, MR, MLT, L, LR, LT, XL, XLR, XLT, XXL, XXLR, XXXL, XXLR

TOG
RATINGS

100g - 4.2
200g - 4.3
300g - 4.4

METALUX

THERMALUX

FOR WARMTH AND COMFORT

NSN 4220-99-279-8046 (L)



SPECIFICATION

- 100% breathable outer shell
- High tech fleece/lycra mix
- Absorbent micro-fleece lining
- Quick-drying & ultra lightweight
- Bacteria & fungus resistant
- Stretch lycra panels provide flexibility
- Elasticated thumb loops & foot stirrups
- Pockets on the hips
- Non-magnetic two way YKK® zip
- Sizes: XS, S, M, ML, MLR, L, LR, XL, XLR, XXL, XXLR

Standard issue - provided to the Royal Navy

TOG
RATINGS

2.3

THERMALUX

THERMICORE

STANDARD + SUB-ZERO OPTIONS

NSN 4220-99-229-5785 (STD)



SPECIFICATION

- Durable outer shell
- Super-soft fleece lining (dual layer on sub zero)
- Seams are flat lock stitched
- Super-soft fleece comfort collar
- Integrated foot stirrups
- Elasticated adjustable waistband
- Elastic thumb stirrups
- Abrasion resistant overprinting
- Zipped arm pocket (sub zero)
- HotSox included
- Sizes: S, M, ML, L, LR, LT, XL, XXL, XXXL

Layer up for more extreme conditions

TOG RATINGS

Std - 0.6
Sub Zero - 1.4

BODYCORE

STANDARD + SUB-ZERO OPTIONS

NSN TBC



SPECIFICATION

- Durable outer shell
- Super-soft fleece lining
- Dual soft-fleece layer on sub zero
- Seams are flat lock stitched
- Super-soft fleece comfort collar
- Velcro neck closure in some styles
- Front entry 2-way zip
- Elastic thumb stirrups
- Integrated foot stirrups
- Sizes: S, M, ML, L, XL, XXL, XXXL

A low profile one-piece undersuit, suitable for cold to very cold conditions.

TOG RATINGS

Std - 0.6
Sub Zero - 1.4

BASE LAYER

TECHNICAL 2-PIECE SYSTEM

NSN TBC



SPECIFICATION

- Designed to ensure you stay comfortable in even the most demanding conditions and can be worn under any drysuit
- Helps maintain core body temperature
- Can be worn on its own or layered up with other undersuits
- Breathable and moisture wicking
- Lightweight and durable ergonomic design
- Thumb stirrups for use when fitting wrists through suit seals
- Foot stirrups to keep long johns in place
- Sizes: S, M, L, XL

Guaranteed comfort under any drysuit, - becoming increasingly popular to our military customer base.

BODYLINER

TROPICAL/ANTI-STING 1-PIECE OPTIONS

NSN 4220-99-833-3876 (L)



SPECIFICATION

- Dual-purpose; can be used as a base layer as well as a tropical swimsuit
- Moisture wicking fleece & stretch lycra
- Front entry 2-way plastic zip
- Breathable & lightweight
- Elasticated thumb loops, built in foot stirrups
- Hood attached (anti-sting option)
- Velcro neck tab (bodyline option)
- Sizes: XS, S, M, ML, MLR, L, LR, XL, XLR, XXL, XXLR

Supplied to The Royal Navy & UK Armed Forces & used by dive teams worldwide.

TOG RATINGS	0.2
-------------	-----

ELECTRACORE

HEATED VEST

3MM NEOPRENE | RECHARGEABLE



Provides heat to give complete warmth to the body when working in cold conditions.



The Northern Diver ‘Electracore’ heated vest has been designed and manufactured with your comfort and warmth in mind. The three heat settings allow you to pick a temperature that suits you and if it happens that you want to raise or lower the temperature, the switch has been positioned in an easy to reach position to the left of your midriff – ensuring that even when you’re wearing a drysuit, the button remains easy to access.

The ‘Electracore’ has been made using a flexible 3.0mm black neoprene shell along with a snug fleece inner lining maintaining comfort for the user, whilst also insulating and reflecting the heat back on to the body, so even if the vest is turned off, there will still be noticeable thermal benefits.

The colour of the On/Off button will identify the heat of the vest. With up to a ten-hour run time, the ‘smart’ lithium-ion battery will last for several dives.

The built in heat panels are waterproof, CE approved and conforms to EN 61000-6-1:2019, EN 61000-6-3:2007/A 1 :2011/AC:2012. Note the battery is not waterproof.

This garment has been designed to be worn underneath a dry suit when being used in and around water.

WHY USE A HEATED VEST?

- Working efficiency increases
- Working safety increases
- Mobility is better (no need for multiple layers)
- Comfort increases

1000 MA	High Setting	Mid Setting	Low Setting
Temperature	50 degrees	40 degrees	25 degrees
Run Times	1hrs 40mins	3hrs	3hrs 20mins
Colour Of Light	Red	White	Blue

SIZES

S, M, L, XL, XXL
(UNISEX)



Scan the QR to learn more...

NSN 8420-99-847-8829 (L/XL)

THERMAROBE CHANGING ROBE

CHANGE OUT OF YOUR WET KIT WITH EASE

PERFECT FOR KEEPING YOU WARM, DRY AND COVERED UP

The oversized design ensures that there is plenty of space inside the robe to allow you to easily change whilst protecting your modesty.

The changing robe is fully waterproof and wind-proof with 300gsm fleece insulation, ensuring you can get changed in comfort – or to just keep warm and dry once you're out of the water. The robe also boasts an adjustable hood, hand warmer pockets, a chest pocket and roll sleeve tabs, so you can achieve your perfect level of comfort.

SPECIFICATION

- Fully waterproof and wind-proof fabric
- 300gsm internal fleece insulation
- Chest pocket (zipped closure)
- Waterproof front entry zip
- Roll sleeve tab to adjust sleeve length
- Adjustable Velcro tabs on the cuffs
- Integrated hood with drawstring adjustment
- Hand warmer pockets (zipped closure)

SIZES

S/M, L/XL (UNISEX)



Scan the QR to
learn more...

MISSION ESSENTIALS

RASH GUARDS & THERMAL SOCKS, READY FOR DEPLOYMENT



LONG SLEEVED RASH VEST

Can reduce salt water irritation
Increases comfort between you & suit
Reduces the chill factor
Slip in and out of suits easier
Wicks sweat away from your body
Short sleeve available upon request
Provides UV protection
Sizes available: S, M, L, XL

NSN 4220-99-248-4252



THERMAL SHORTS

Comfortable close-fitting shorts
Suitable to be worn with a rash vest
Super-soft fabric
Flatlock seams
Sizes available: S, M, L, XL

NSN TBC



3.0MM NEOPRENE VEST

Superstretch neoprene
Hood attached
Triple glued & blind stitched seams
Extra layer of warmth on the main body
Sizes available: S, M, L, XL

NSN 4220-99-328-4605



DRYSOX

Moisture-wicking, anti-bacterial, breathable & 100% waterproof socks, designed with a tri-layer fabric for top performance. The socks are mid-length and perfect for countless applications in wet conditions where it's essential to keep your feet warm, dry & comfortable. Lightweight, high performance, easy to wash & a seamless perfect fit. Sizes available: UK 4-12

NSN TBC



HOTSOX

Designed for dry & warm feet
Mid length with high wicking fleece
Flat lock stitched with no raised seams
Sizes available: UK 3-13

NSN 4220-99-315-0036



BODYLINE SOCKS

Flat lock stitched with no raised seams
Heel protector & cut to fit perfectly
Sizes available: UK 5-13

NSN 4220-99-483-1878



TEMPERATE SOCKS

Flat lock stitched with no raised seams
Heel protector & cut to fit perfectly
Sizes available: UK 5-13

NSN 4220-99-709-4973



NEOPRENE SOCKS

4.5mm neoprene socks
Low profile flat lock stitched seams
Available to fit to drysuits
Sizes available: UK 3-14

NSN 4220-99-545-2980

SEMI-DRY WETSUIT

MULTIPLE COLOUR OPTIONS AVAILABLE

THE SEMI DRY WETSUIT CAN BE MANUFACTURED IN THICKNESS RANGING 3MM TO 7MM. VARIOUS COLOURS AND CAMOUFLAGE PATTERNS AVAILABLE.

SPECIFICATION

- Fabric build: superstretch neoprene
- Ti-Ax Thermacote titanium lining
- Triple-glued & blind-stitched seams
- Rear entry, horizontal YKK® plastic zip
- Smooth-skin neoprene neck with adjustable Velcro collar
- Smooth-skin neoprene wrist and ankle seals with neo warmers
- 1x large leg pocket (Velcro closure)
- Strong pad knee and seat areas

SIZES

S, M, ML, L, XL, XXL (UNISEX)



Scan the QR to
learn more...





TROPICAL/TEMP

SHORTIE + LONG JOHN, TWO PIECE

THESE 2-PIECE WETSUITS ARE SUPPLIED AS STANDARD ISSUE TO THE UK'S ROYAL NAVY AND USED BY THE NAVY, ARMY AND MARINES.

The wetsuits are completely non-magnetic and used for tasks such as EOD Diving, MCM, Underwater Engineering, Ships Diving, Search, Recovery and Reconnaissance.

Provided in different thickness to offer a diving system solution to varying climates globally. The system incorporates a Long John and Shortie which can be worn together as a system or independently offering an extremely versatile system.

The wetsuits can be worn in conjunction with thermal base layers to allow for increased thermal values. The suit design offers comfort and manoeuvrability to the operator when used with Re-Breather and standard air diving sets.

SHORTIE OVER JACKET



3.0mm Tropical
5.0mm Temperate

Superstretch neoprene garment
Short arms & legs
YKK® non-magnetic front entry zip
Non-chafe collar
Glued & blind stitched seams

LONG JOHN

5.0mm Tropical
5.0mm Temperate

Superstretch neoprene garment
Long arms & legs
Knee & elbow pads for protection
YKK® non-magnetic rear entry zip
Smooth skin floating collar
Glued & blind stitched seams



SIZES

S, M, ML, L, XL, XXL (UNISEX)



Scan the QR to
learn more...

CAMO/MTP WETSUIT

COMBAT WETSUIT - DUAL PURPOSE - 2-PIECE

SYSTEM INCORPORATES A 5MM LONG JOHN AND SHORTIE WHICH CAN BE WORN TOGETHER AS A SYSTEM OR SEPARATELY OFFERING VARYING OPTIONS OF USE.

The wetsuits can be worn in conjunction with thermal base layers to allow for increased thermal values. The suit design offers comfort and manoeuvrability to the operator when used with Re-Breather and standard air diving sets. Wetsuits can be manufactured using any camouflage pattern lining you may require.

SHORTIE OVER JACKET

- Superstretch neoprene
- Short arms & legs
- YKK® non-magnetic rear entry zip
- Non-chafe collar
- Glued & blind stitched seams



LONG JOHN

- Superstretch neoprene
- Long arms & legs
- MTP knee & elbow pad protection
- YKK® non-magnetic front entry zip
- Smooth skin floating collar
- Glued & blind stitched seams



SIZES

S, M, L, XL, XXL (UNISEX)



Scan the QR to
learn more...

RELATED ITEMS



Accessories include wetboots, superstretch gloves and hoods.

RE WETSUIT

REAR ENTRY - 3MM OR 5MM OPTIONS

THIS MILITARY WETSUIT IS BUILT FOR DEMANDING OPERATIONS IN BOTH TROPICAL AND TEMPERATE WATERS.

Its all-black design offers a professional, low-profile appearance, while the choice of 3mm or 5mm superstretch neoprene ensures the right balance of flexibility, thermal protection, and performance in any environment.

Ti-Ax Thermacote lining enhances insulation without adding bulk, and reinforced elbow and knee panels provide durability where it's needed most. With smooth-skin seals, a heavy-duty YKK rear zip, and an adjustable collar system, this suit is engineered to minimise water ingress and maximise comfort during extended missions.

SPECIFICATION

- Fabric build: superstretch neoprene
- Ti-Ax Thermacote titanium lining
- Triple glued, blind stitched seams
- Smooth-skin neck
- Velcro closing neck tab
- Rear entry, vertical YKK® plastic zip
- Smooth-skin wrist and ankle seals
- Protective elbow and knee pads

SIZES

S, M, ML, L, XL, XXL (UNISEX)



Scan the QR to
learn more...

BEAVERTAIL WETSUIT

2 PIECE SYSTEM, HOODED - 5MM OR 7MM OPTIONS

DESIGNED FOR HEAVY DUTY MILITARY OPERATIONS, THIS WETSUIT IS PROVIDED WORLDWIDE TO VARIOUS MILITARY GROUPS.

A proven 2-piece design with double neoprene around the torso for maximum insulation and single layers over the arms and legs for flexibility, it delivers warmth without restricting movement. The step-in jacket features an integrated hood and secure beavertail flap to reduce water ingress, while the Farmer John suit adds full lower-body coverage with reinforced Kevlar® knees for durability. This versatile system can be customised with additional pockets, Kevlar® panels, or protective pads to meet specific operational requirements.

SPECIFICATION

- Fabric build: superstretch neoprene
- Ti-Ax Thermacote titanium lining, triple glued, blind stitch seams
- Adjustable Velcro shoulder straps (long john)
- Front entry YKK® plastic zip (over jacket)
- Smooth-skin wristseals with zipped closure (over jacket)
- Kevlar® knee protection (long john)

SIZES

S, M, L, XL, XXL (UNISEX)



Scan the QR to
learn more...

FE WETSUIT

FRONT ENTRY , HOODED - 2MM OR 7MM OPTIONS

STREAMLINED PROTECTION FOR DEMANDING OPERATIONS.

The front entry military wetsuit is a one-piece semi-dry system with an integrated hood, built from ultra-flexible 4-way superstretch neoprene (2-7 mm) for both comfort and thermal performance.

Designed for quick, solo entry and exit, its front mounted YKK Aquaseal® zip offers reliable water sealing and smooth operation under pressure. Available in unisex sizes and compatible with a shortie layer for extra warmth, it's a streamlined solution tailored to the needs of military divers.

SPECIFICATION

- Fabric build: superstretch neoprene
- Ti-Ax Thermacote titanium lining
- Triple glued, blind stitched seams
- Smooth-skin neck
- Velcro closing neck tab
- Diagonal YKK® front entry zip
- Smooth-skin wrist and ankle seals
- Strong protective elbow and knee pads

SIZES

S, M, ML, L, XL, XXL (UNISEX)



Scan the QR to
learn more...

ESR WETSUIT

EMERGENCY SERVICES RESPONSE

A VERSATILE OPTION - POPULAR AMONGST COASTGUARDS AND OTHER SEA RESCUE ORGANISATIONS.

This high visibility orange suit is manufactured from superstretch neoprene, featuring a front entry YKK zip and moulded Velcro closing collar.

This suit can be supplied in 1.5mm, 3mm or 5mm thicknesses, allowing you to achieve the perfect level of thermal protection required for any given rescue scenario. The 3mm and 5mm variants include protective zipped cuffs and ankles and each wetsuit is supplied with a matching separate highly visible hood.

SPECIFICATION

- One piece: long john and hood
- High vis orange 4-way superstretch neoprene
- Available in 1.5mm, 3.0mm and 5.0mm
- Ti-Ax Thermacote titanium lining
- Excellent thermal protection
- Reflective strip print detailing
- Front entry YKK® plastic zip
- Secure Velcro collar tab
- Smooth-skin seals
- Zipped closure on wrists and ankles
- Strong pad elbow, knee and seat areas

SIZES

S, M, ML, MLT, L, LT, XL, XLT, XXL, XXXL (GENTS)
S, M, L, XL, XXL (LADIES)



Scan the QR to
learn more...



SAR WETSUIT

SEARCH AND RESCUE

ENGINEERED TO PERFORM WHEN CONDITIONS ARE AT THEIR WORST, KEEPS RESCUERS PROTECTED.

The 4mm Search and Rescue Wetsuit is constructed from a very pliable superstretch neoprene, assisting with the donning of the suit, and making it a great choice for a wide range of search and rescue operations.

The suit's distinctive, high visibility colour ensures that the wearer is always highly visible, even in low visibility conditions.

Easily secured with a front-entry YKK zipper and hook and loop tabs, the suit's collar is moulded for comfort and features a Smooth Skin neoprene seal - this material is also present at the wrists and ankles. Cushioning features on the knees, elbows and seat.

SPECIFICATION

- Ideal for helicopter/SAR operations
- Pieces: long john and hood
- Fabric build: 4.0mm high vis superstretch neoprene
- Ti-Ax Thermacote titanium lining
- Triple glued, blind stitched seams
- Collar with Velcro closing neck tab
- Front entry YKK® plastic zip
- Smooth-skin neck, wrist and ankle seals
- Strong pad elbows, knees and seat areas
- RESCUE printed down left thigh

SIZES

S, M, L, XL, XXL
(UNISEX)



Scan the QR to
learn more...



ACCESSORIES

GLOVES, BOOTS & BAGS

076

DIVE HOODS

077

DRY GLOVE RING SYSTEMS

078

DIVE GLOVES

079

IN-WATER BOOTS

081

WELDED DRYBAGS

085

LIGHTWEIGHT HOLDALLS

086

BODY BAGS

087

R.A.I.D - PROTECTIVE CASES

088

CUSTOM CASES

088

NON MAGNETIC TOOL KITS

089

SEARCH BOXES

DIVE HOODS

COVERT COMFORT, UNCOMPROMISED PROTECTION



5MM SV NEOPRENE DIVE HOODS LINED OR SKIN FACE SEAL OPTIONS

Improved design with superior fit and unrivalled comfort. Supple, 5mm superstretch neoprene with plush internal lining
Internal skin neoprene face seal
Supervent to allow for release of trapped air
Unique Ti-Ax® Coating
Glued and blind-stitched seams to minimize water exchange and keep you warm
Sizes: S, M, L, XL, XXL



4MM REVERSIBLE HOOD

Superstretch neoprene
Yellow high vis for training purposes
Reverse to black for covert ops
Vents for pressure equalisation
Sizes: S, M, L, XL, XXL

NSN 4220-99-693-0503



5MM MTP REVERSIBLE HOOD

Superstretch neoprene
Reverse MTP or all black options
Perforated ear pieces
Vents for pressure equalisation
Sizes: S, M, L, XL, XXL

NSN 4220-99-242-9932



6MM BOATING OPS HOOD

Superstretch neoprene
Nose, mouth and ear vents allow for communication systems to be used
Vents for pressure equalisation
Sizes: S, M, L, XL, XXL

NSN 4220-99-980-9278



2.0MM & 5.0MM COMMS HOOD

Superstretch neoprene
Comms cable fixtures for radio headset
Perforated ear pieces
Vents for pressure equalisation
Sizes: S, M, L, XL, XXL

NSN 4220-99-669-1830 (2mm)

NSN 4220-99-238-2275 (5mm)



6.5MM SKIN/SKIN HOODS

Superstretch neoprene
Plush thermal inner layer
Smooth skin outer face seal
Ideal for use with full face masks
Vents for pressure equalisation
Sizes: S, M, L, XL, XXL

NSN TBC



6.5MM SUPERVENT HOODS

Superstretch neoprene
Plush thermal inner layer
MA heavy duty, anti Velcro outer lining for increased longevity
Vents for pressure equalisation
Sizes: S, M, L, XL, XXL

NSN TBC

NSN 4220-99-426-1434



DRYGLOVE RING SYSTEM

FOR USE WITH NEOPRENE + MEMBRANE SUITS

Cold hands can reduce dexterity and compromise safety during a dive. Northern Diver's innovative dry diving glove systems keep hands warm while allowing divers to operate essential equipment efficiently.

Gloves conform to the requirements of European Directive 89/686/EEC, European standards EN420:2003, EN374:2003, EN388:2003 and A1:2009.

ANSELL EXTRA™ GLOVE

- Extremely high resistance to many ketones, salts, detergents, alcohols, alkalies and fats
- 100% cotton flock lining provides a softer more comfortable glove that helps absorb perspiration
- 100% natural rubber with no filters
- Excellent resistance to mechanical hazards plus chemical protection
- Chlorinated for better grip and increased chemical resistance

THERMAL FLEECE INNER GLOVE

- Thermal 4-way stretch fleece
- Flat lock stitched seams for comfort
- Snug fit around wrist area
- Additional thermal protection
- Removable for warmer waters or for use post dive

Fitting this dry glove system to your own drysuit is easy, as the package includes the unique bespoke fitting tool, sealing adhesive and a sealing adhesive application brush.

SIZES

S, M, L, XL



Scan the QR to
learn more...

DIVE GLOVES

TOUGH PROTECTION, MISSION-READY PERFORMANCE



OPTIMUM 3D ZIPPED GLOVES

3.0mm or 5.0mm superstretch neoprene
Finex inner lining with a glide skin seal
YKK® zip cuff closure with securing tab
Overprinted palm for extra protection
Pre-molded ergonomic design
Sizes: S, M, L, XL, XXL

NSN 4220-99-878-9462



DRY SKIN GLOVES

5.0mm superstretch neoprene
Internal dry seal ring to keep water out
Thermal fleece internal liner
Flexible, quick drying & efficient insulating
Silicone printed palms add extra grip
Sizes: S, M, L, XL, XXL

NSN TBC



ARCTIC EXTREME SEMI-DRY

5.0mm superstretch neoprene
Neotex seals with outer protective seal
Seal forms a 'water lock' system
Ensures no flushing, keeps hands warm
Reinforced 'strobil' stitched seams
Sizes: S, M, L, XL, XXL

NSN 4220-99-153-5347



KEVLAR® GLOVES

Available in 2mm, 3mm & 5mm
Superstretch neoprene
Extra strength
Kevlar® palm/fingers
Glass fibre reinforcement on finger pads
Polymer coating on finger tip seams
Sizes: S, M, L, XL, XXL

NSN 4220-99-935-3504



HD SUPERSTRETCH GLOVES

Available in 2mm, 5mm, 7mm
4-way superstretch neoprene
Warm titanium lining
High-grip silicone overprint texturing
Liquid taped seams
Superior flexibility
Sizes: S, M, L, XL, XXL

NSN TBC



SUPERSTRETCH GLOVES

Available in 2mm, 5mm, 7mm
4-way superstretch neoprene
Warm titanium lining
Protective overprint
Superior flexibility
Easy to use/don
Sizes: S, M, L, XL, XXL

NSN 4420-99-321-1369 (5mm)



SCAN THE QR CODE FOR ALL GLOVES

To access detailed product information, download technical datasheets, view instructional and demonstration videos, and explore additional resources—or visit ndiver-military.com



AMARA PALM ZIPPED GLOVES

2.0mm black nylon construction
Black amara faux suede palm & fingers
Silicone printed finger tips
Palm panels are padded for extra comfort
YKK® zip closure with a longer cuff
Warm fleece inner lining
Sizes: S, M, L, XL, XXL

NSN 4420-99-837-9168 (2mm)



MTP SUPERSTETCH GLOVES

Available in 2.0mm, 5.0mm and 7.0mm
4-way superstretch neoprene
Warm titanium lining
MTP pattern
Other patterns available upon request
Sizes: S, M, L, XL, XXL

NSN TBC



STORMFORCE GLOVES

4.0mm superstretch neoprene
Comfortable & warm
Textured rubber palm gives excellent grip
Does not compromise on flexibility
Wrist strap minimises water migration
Sizes: S, M, L, XL, XXL

NSN TBC

ROCKSWIM BOOTS

BUILT TO PERFORM ON LAND AND IN WATER - STANDARD & SAFETY MODELS



NSN 4420-99-891-7760



NSN 4420-99-549-5348

SECURE FOOTING. MAXIMUM PROTECTION. MISSION READY

Designed for operations in and out of water, these boots deliver durability, grip, and protection. The Rock Swim Safety Boots feature Velcro closures for quick adjustment, while the Rock Swim Boots offer a secure lace-up fit. Both models expel water through side vents and drainage points, and provide a rugged hi-grip sole, composite toe, reinforced cladding, and external ankle protection.

Compatible with ISBO military fins, with optional neoprene socks, these boots are oil and chemical resistant, meet EC PPE Directive 89/686/EEC and EN ISO 20345:2004, and are essential when substantial PPE is required.

Sizes: UK 5-13



Scan the QR to
learn more...

PRO-SAFE BOOTS



WATER RESCUE SAFETY BOOTS



PROVIDES EXCEPTIONAL COMFORT, CONTROL, GRIP AND PROTECTION IN WATER & ON LAND

Featuring a Free-lock fast lace system & wide opening makes the process of donning super quick & easy; saving time in crucial emergency's when time is against you. Composite mid-sole & toe protection keep the weight of the boots very low.

SPECIFICATION

- Certified to EN 20345:2011
- Build: synthetic leather, PU heel, mesh inner, anti-static, oil resistant/slip resistant outsole
- Double stitched seams for added strength,
- Lightweight composite mid-sole/toe protection
- Padded ankle collar for extra ankle protection, reinforced PU outer heel cage
- Free-lock fast lace system, low-profile to ensure no snag hazards
- 3 generous reinforced mesh drainage holes, ventilated & moulded foot bed
- Extra long pull on loop - easy use with gloves
- Weight: 600g (1.3lbs) per boot
- Sizes: UK 3-14

**ALL FOOTWEAR
COMPATIBLE WITH
ALL DRYSUITS &
WETSUITS**

NEOPRENE WETBOOTS

AVAILABLE IN BLACK & MTP/CAMO PATTERNS



SPECIFICATION

- 5.0mm neoprene
- Titanium lined for extra warmth & comfort
- Rugged anti-slip rubber sole
- YKK heavy duty durable side zip
- Velcro zip lock, additional heel & toe protection
- Flexible rubber soles
- Alterations can be made for a wider fit
- Sizes: UK 3-14



All neoprene items, including wet boots, are available in MTP/ camo patterns that suit your specific country to aid the user in the protection of themselves & their equipment from observation by enemy forces. Speak to a member of our military sales team for more information.

WELDED DRYBAGS



UNCOMPROMISING PROTECTION FOR MILITARY EQUIPMENT



DRY SEAL ROLL TOP DRYBAGS

Dry seal bags are sure to keep your kit safe and dry designed for anything from recreational to rescue to military use.

- High quality 420D TPU
- Durable, strong and flexible
- Secure 100% watertight closure
- Watertight vacuum seal closure
- Completely leak-proof
- Air purge valve to help compress kit inside
- Quick release buckles and plastic D-rings
- 2x adjustable removable shoulder straps
- Colours: black & red (others upon request)
- 10L, 20L, 50, 120L



PVC ROLL TOP DRYBAGS

- Heavy-duty PVC
- Roll-top quick release buckle system
- Securely close and seal
- Convenient carry handle
- Keeps the water out or in (for wet items)
- 12L is perfect for stowing in small places
- 51L and 117L include a detachable shoulder strap to transport a heavier load
- Colours: black, yellow, red & orange
- Sizes: 12L, 51L, 117L
- Custom logos and sizes can be made upon request - contact the sales team



90L SUBSAC ROLL-TOP HOLDALL

- 420D TPU
- 100% water/air tight, leak proof dry seal
- Air purge valve to help compress your kit
- Adjustable alpine-cut shoulder straps
- Quick release buckles
- One large spacious compartment
- Multiple compression straps
- High quality plastic D-rings
- Colours: black
- Size: 90L



BOAT ENGINE DRYBAGS

Designed to carry, store, and transport a range of boat engines with ease, this waterproof dry bag is built from tough 420D nylon with a reinforced base for full protection. Adjustable compression straps ensure a secure, tailored fit for any engine size.

- Black 420D nylon TPU
- Fully waterproof, inner welded seams
- Oral inflation tube
- Adjustable compression straps
- Stainless steel 316 grade D-ring handles
- Optional internal reinforced panels can be fitted to strengthen the base
- BDM waterproof zip
- Colour: black (other colours upon request)
- Size: custom made to your specification

WP2000 DRY WEAPONS BAG

Designed to carry a range of various sized weapons due to its roll down dry system. This weapons dry bag has a secure 100% watertight closure, the dry seal creates a vacuum like seal that will not let water in. The bag has an adjustable carrying shoulder straps to enable easy carrying/transporting.

- Manufactured from black 450D TPU
- Proven to be incredibly resistant to abrasion & tearing
- 100% welded seams
- Roll top dry seal closure
- Adjustable fix lock buckle compression strap system
- Adjustable padded rucksack straps with height adjustable chest strap
- Completely dry to protect the weapon from water, sand and other contaminants
- 160mm (6.3") long oral inflation device
- 2x 35mm (1.4") plastic d-rings
- Colour: black (other colours upon request)
- Size: 115L

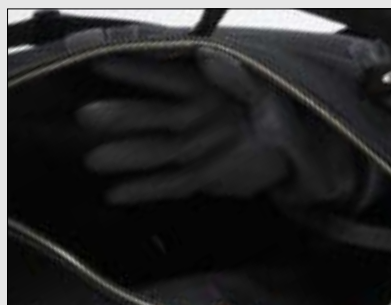




WP1000 DRY WEAPONS BAG

The WP1000 dry weapons bag features a replaceable end cap, allowing operators to shoot through the bag. The cap is secured with an O-ring system for quick replacement, with a spare cap and O-ring stored in an internal compartment.

- Welded seams, dual dry zip closure
- Adjustable/removable shoulder straps
- Completely dry to protect the weapon from water, sand and other contaminants
- Oral inflation device
- Replaceable end cap (nose cone)
- Replaceable glove system
- 3D neoprene brass catcher
- Internal pocket stores spares
- Size: 105*38*12cm (41.3* 15* 4.7")



TROOPER DAYSACK

This military waterproof daysack is engineered to keep essential gear dry, secure, and mission-ready. Constructed from durable tri-laminate material with a waterproof inner layer and a tough Cordura® exterior, it resists rubbing, tearing, and the harshest conditions.

- Hardwearing textured surface
- Fully waterproof
- Adjustable carrying straps
- Reinforced at the joints with external fastening system
- Inflator tube
- Molle panneling
- Internal pocket to hold repair kit
- Adjustable compression straps
- Dual zip fastening, a zip with water tight closure and protective zip
- Repair kit included
- Colour: black (other colours upon request)
- Size: 130L





ZIPPED DAYSACK

A compact waterproof backpack designed for soldiers and operators who need to carry essential gear while keeping it completely dry in demanding environments.

- Large, watertight and airtight bag
- Manufactured from 500 denier PVC
- Welded seams for extra reinforcement
- YKK® high compression dry zip
- Press stud to secure zip puller when closed
- Adjustable, padded shoulder straps
- Load tested to 100kg (220lb)
- Option to fit inflation and exhaust valves
- Colour: black
- Size: 60L
- NSN 4220-99-993-1315

ZIPPED DRY BAGS WITH MOLLE SYSTEMS

Designed with MOLLE system panels welded to the front and sides, making it easy for users to effortlessly attach any MOLLE compatible bag or equipment to it.

- Available in a 60L and 240L
- Manufactured from a black nylon TPU CN
- High frequency welded seams for extra reinforcement
- Lightweight bag with integrated MOLLE system*
- Fixed, adjustable, padded shoulder straps
- Load tested to 100kg (220lb)
- x2 compression straps and 50mm (2") plastic d-rings
- Reinforced corners and an inflation/deflation tube

2 MODELS AVAILABLE

- Zipped daysack with MOLLE
Size: 60L
- Zipped Bergen with MOLLE
Size: 240L
NSN 4220-99-841-8651



UTILITY POUCH

Depth-rated to 30 m, this dry bag protects radios, flares, and medical or electrical gear. Made from welded TPU with a YKK® Aquaseal® zip, it includes an inflation tube, D-rings, and MOLLE compatible straps.
Size: 3L | NSN 4220-99-484-3951



VOYAGER RUCKSACK

- Heavy duty PVC backed Cordura® material
- Excellent abrasion resistance
- Fully washable interior
- Roll-down top to keep the water in or out
- 4-point compression strap system
- Easy carrying using fixed padded/adjustable rucksack straps
- Can fit inflation and exhaust valves
- Colour: black
- Size: 78L



NDB5-W HOLDALL

- Spacious main compartment
- D-zip splash-proof opening
- Welded seams with 3 internal mesh pockets
- Top handle and dual end haul handles
- Removable, padded shoulder straps
- Side equipment loops
- Front ID pouch, washable inside and out
- Changing mat storage straps (mat separate)
- Includes welded inner bag
- Colour: black
- Size: 190L



LIGHTWEIGHT BAGS

NDB5 MILITARY HOLDALL - 110L + 160L MODELS

- Spacious main and smaller end compartments
- D-zip opening with weather protective zipper flap
- Internal mesh pockets
- Additional reinforcement on the base
- Comfortable top-mounted carry handle
- Adjustable, removable alpine-cut shoulder straps with an ergonomic fit - now with extra padding for additional comfort and an adjustable chest strap
- Webbing loops running down both sides of the bag can be used with carabiner or similar to attach items
- Twin haul handles on either end - now padded with neoprene covers for extra comfort
- Water-resistant, rugged design with extra bartacs and double stitching to strengthen high wear areas
- ID pouch on the front of the holdall
- Washable inside and out
- PU and nylon stitched construction
- Supplied with inner clothes bag
- Optional changing mat stores on side of bag
- Colours: black, red & blue
- NSN 4220-99-601-7198 (160L)
- NSN 4220-99-492-9918 (110L)

DISASTER RELIEF BODY BAGS

CONTACT OUR MILITARY TEAM TO DISCUSS YOUR REQUIREMENTS.



As recent years have unfortunately shown us, body bags and PPE are vital to hold in reserves for anticipated wars, natural disasters and pandemic events. For efficient triage and handling of the deceased Northern Diver can supply body bags and remains pouches instantly in a crisis. We stock specialised bags available to both the UK and overseas clients. We are also able to supply PPE upon request.

INNER BODY BAGS

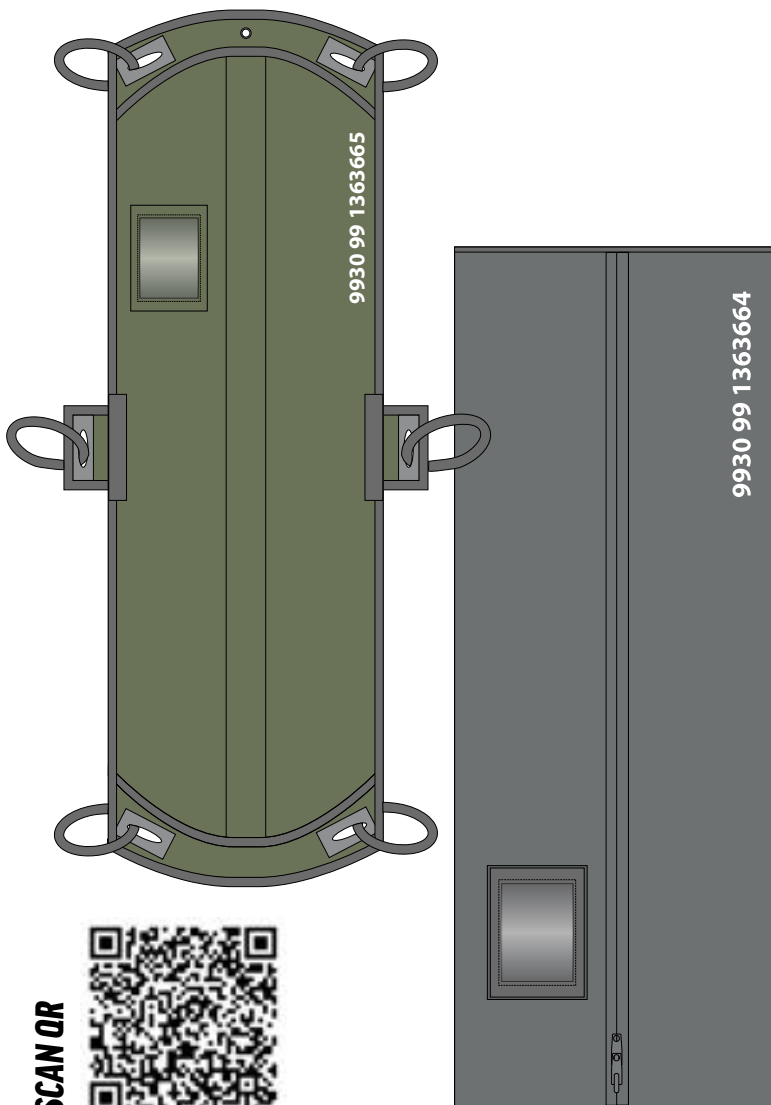
- UK style (1956 x 735mm)
- Overseas style (2641 x 1216mm)
- Welded polyurethane
- Outer document pouch
- 2-way zip, metal runner & pull cord
- NSN 9930-99-136-3664 (UK)
- NSN 9930-99-988-8262 (Overseas)

OUTER BODY BAGS

- UK style (2337 x 762mm)
- Overseas style (3025 x 1168mm)
- Cordura fabric
- Outer document pouch
- 6x lifting handles
- 25mm stainless steel eyelet
- 2-way zip, metal runner & pull cord
- NSN 9930-99-136-3665 (UK)
- NSN 9930-99-134-7959 (Overseas)

We also offer specialized solutions for sensitive operations, including children's bodybags and remains pouches, designed to meet the same high standards of durability, hygiene, and secure handling as our other field equipment.

Images for illustrative purposes



SCAN QR





FULL BROCHURE WITH MORE SIZES AVAILABLE UPON REQUEST - CONTACT US

These injection-moulded cases offer the ultimate protection for transporting weapons, ammunition, communication devices, EOD and medical equipment, laptops, cameras, rifles, shotguns, rescue kits, and other specialist military gear.

Built to withstand floodwaters and temporary submersion, they safeguard delicate equipment from handling abuse, extreme conditions, dust, chemicals, shock, high temperatures, and crushing. Engineered for high performance and durability, they are ideal for the toughest military and outdoor environments."



SIZE	DIMENSIONS (EXTERNAL)
3L R.A.I.D	(L*W*D): 219*185*154mm (8.6*7.3*6.1")
6.5L R.A.I.D	(L*W*D): 270*231*180mm (10.6*9.1*7.1")
15L R.A.I.D	(L*W*D): 450*350*160mm (17.7*13.8*6.3")
17.9L R.A.I.D	(L*W*D): 410*342*204mm (16.1*13.5*8")
35.5L R.A.I.D	(L*W*D): 530*435*240mm (20.9*17.1*9.4")
54L R.A.I.D	(L*W*D): 1189*405*160mm (46.8*15.9*6.3")
84L R.A.I.D	(L*W*D): 670*508*355mm (26.4*20*14")
113L R.A.I.D	(L*W*D): 830*565*325mm (32.7*22.2*12.8")
154L R.A.I.D	(L*W*D): 830*565*429mm (32.6*22.2*16.9")

**IP67 - protected from dust and capable of withstanding water immersion between 15 cm and 1 meter for 30 minutes.*

CUSTOM MADE CASES TO PROTECT YOUR EQUIPMENT

WE OFFER BESPOKE SOLUTIONS TO MEET YOUR REQUIREMENTS



Northern Diver provides a complete customisation service, backed by a professional team of engineers experienced in managing complex projects from design to final product.

Our injection-moulded cases are built to withstand floodwaters and temporary submersion, keeping valuable equipment safe and dry. They protect delicate gear from extreme conditions, offering shockproof, dustproof, waterproof, un-crushable, chemical-resistant, and high-temperature-resistant performance.

We can work from your existing design or create a custom solution tailored to your budget and requirements.

CASE TYPE

Which case do you need? Our expert team would guide you to make the correct decision.

INTERIOR PROTECTION

We can customise the foam inserts to provide maximum protection to your equipment.

DESIGN

We can accept your own design, or our qualified engineers can assist with your project. We can produce CAD drawings, product samples and offer you a complete piece of mind.

OTHER DETAILS

Lid stays, purge valves, custom logos. Our mission is to offer you a high-quality product that will keep your equipment safe.



36 PIECE NON MAG TOOL KIT

General-purpose tool set made from beryllium copper, phosphor bronze, and aluminium. Includes small and medium pliers, anti-slip and offset screwdrivers, wrenches, hammers, scrapers, chisels, probes, brushes, tweezers, scissors, and more. Supplied in a durable fabric carrying bag.



49 PIECE NON MAG TOOL KIT

Mechanical tool set made from beryllium copper alloy. Includes Allen keys (inches & mm), 1/2" square-drive ratchet with accessories, and a selection of sockets (inches & mm). Supplied in a durable fabric carrying bag.



EXCAVATION NON MAG TOOL KIT

This durable tool set, made from beryllium copper, phosphor bronze, and aluminium, includes a selection of hammers, scrapers, and chisels, as well as a pick and shovel. All tools are supplied in a sturdy fabric carrying bag for convenient storage and transport.



NON-MAGNETIC TOOL KITS A, B AND C

Designed for EOD units to safely handle old, historic, and potentially unknown UXO, these kits focus on versatility rather than specialised ordnance tools, which would be impractical given the range of possible devices. Instead, a comprehensive set of general-purpose tools is provided, offering flexibility for a wide variety of weapon types.

Tools in EOD Kits A, B, and C are intended for use when high-order detonation is unacceptable. Their non-sparking design also makes them safe in explosive atmospheres or other hazardous environments. All tools are individually certified to STANAG 2897 EOD standards.



SEA-BED SEARCH BOXES

This set is currently provided to the British MoD to assist with seabed searches. Users receive a full contents page with each box & an explosive-free certificate. Full system supplied in 4 rugged peli cases.

NSN

8145-99-260-9214 (seabed search A)

8145-99-727-2664 (seabed search B)

8145-99-285-4200 (hook and line equipment)

8145-99-153-3463 (hull/ancillary search & EOR)



MIODA BOXES

Magnetically Influenced Ordnance Divers Apparel
Designed to be carried on clearance diving vessels, sealed until required. This set of two wheeled boxes contains diving apparel for 6 divers. The kit includes the full dive kit that is required to conduct a diving operation on potentially live sea mines - non-magnetic drysuits, wetsuits, boots, masks, fins, etc.

Clearance divers perform a variety of tasks that can make their kit obtain a magnetic signature by contamination or other means. The MIODA System ensures that magnetically clean kit is available.

NSN

4220-99-904-8601 (BOX A)

4220-99-324-0270 (BOX B)



UW FORCE PROTECTION CASES

Bespoke cases with individual storage compartments and foam inserts in various layers to safely house the many items within a force protection kit.

NSN

4220-99-337-6332 (ANCILLIARY ITEMS CASE)

4220-99-216-1585 (VULCAN CASE)

4220-99-990-3615 (DISRUPTOR CASE)



SCAN QR



Pictured: EOD Divers

MILITARY DIVING EQUIPMENT

092	SONAR MARKERS & MINE RECOVERY
094	SCADE SELF-CONTAINED AIR DIVING SYSTEM
096	DAMSEL DIVER AIR MONITORING SYSTEM
097	MILITARY BCDs
098	CYLINDERS & TANK ACCESSORIES
100	REGULATORS & GAUGES
102	DIVER COMMUNICATIONS ANALOGUE & DIGITAL MODELS
104	HMV, FINS,KNIVES & SNORKELS
108	WEAPONS LIGHTING/LASER MOUNTS
110	UNDERWATER DIVE LIGHTS/STROBES
112	WEIGHTS, BUOYS & REELS
114	COMPRESSORS
115	FIRE FIGHTING SPARES
116	TEST & ANALYSER EQUIPMENT
117	SURFACE SUPPLY PANELS & CHAMBERS

SONAR MARKER & MINE RECOVERY

SMMRO - MARK, RECOVER, AND OPERATE WITH CONFIDENCE



The SMMRO is deployed from inflatable Class MM craft by clearance diving units (CDUs) and was introduced into service in 1985. The Mod 1 version, featuring numerous technical improvements, entered service from 1999.

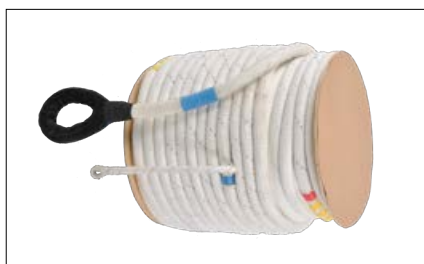
Commonly known as the 'icos line,' the SMMRO comprises a recovery line, non-magnetic sonar reflector, anchor, non-magnetic anchor, and surface marker float. Mod 1 components are fully compatible and interchangeable with earlier versions, allowing both types to be used as required.

The SMMRO is the only datum marking system authorised for live MCM/EOD operations. It is used to mark sonar contacts for diver investigation, improve seabed datum during MCM/EOD operations and exercises, mark located or inert mines, recover RCMD vehicles in case of malfunction, and serve as a diver's shot, shot rope, or distance line during diving operations and exercises.



SURFACE MARKER FLOAT

Colour: yellow
Perfect for army & engineer diving
NSN 1075-99-461-1796



RECOVERY LINE ASSEMBLY

Marked rope, 100m length
Used to determine depth of objects
Can be used to retrieve inert mines
NSN 1075-99-921-4616 (100m)
NSN 5845-99-797-8095 (75m)



SONAR REFLECTOR

Icosahedron-shaped device that spreads sonar range, giving the operator a more detailed picture of the object of interest.
NSN 5845-99-531-1140



ANCHOR

Anchor attaches to the Sonar Reflector to secure it.
NSN 2040-99-750-0132

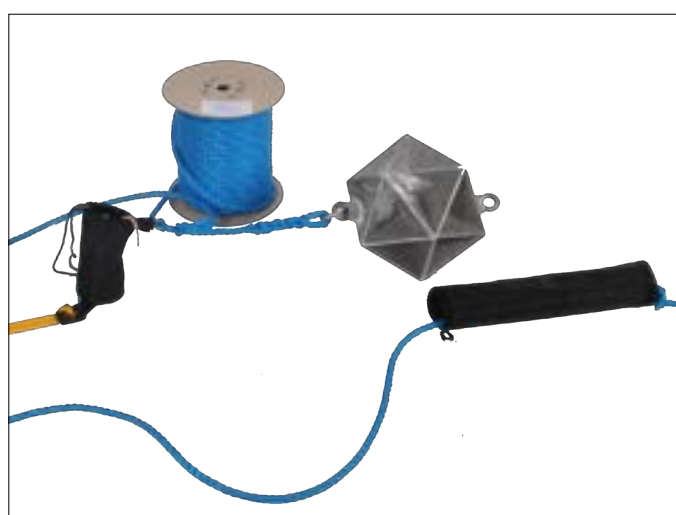


SHACKLES

Available in 2 sizes and made from 316 stainless steel.
NSN 4030-12-149-6655 (0.6Tonne)
NSN 4030-12-166-2573 (3Tonne)

MRO

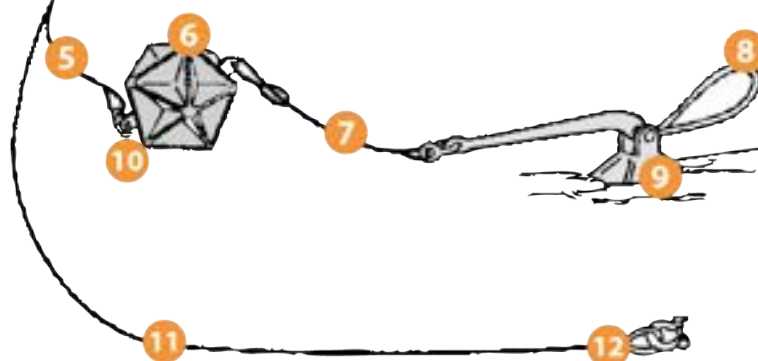
DEPLOYED CONDITION



LIGHTWEIGHT MINE RECOVERY OUTFIT (MRO)

A lightweight version of the Sonar Marker and Mine Recovery Outfit, with the same features. As with the other version, this item's components are interchangeable with the previous components.

- [1] Surface marker float
- [2] Reflective strips
- [3] Marker distress light
- [4] Polyester recovery line
20mm x 75m or 100m
- [5] Rope tail - 10*300mm
- [6] Icosahedron reflector
- [7] Anchor
- [8] Tripping loop
- [9] Non magnetic Anchor
- [10] 0.6t straight shackle
- [11] Polyester recovery line
5m (tail to thimble eye)
- [12] Thimble eye



SCAN QR



SCADE

SELF-CONTAINED AIR DIVING EQUIPMENT



Developed exclusively by Northern Diver, SCADE is the next-generation all-in-one dive system engineered for operational superiority. Built with military precision, SCADE combines safety, modularity, and ease of use into a single uncompromising platform.

The SCADE system is a fully modular air-breathing system, eliminating compatibility concerns and the need to assemble multiple components. Using the Maintenance Tool & Test Kit, it can be rapidly configured as either a Full-Face Mask (FFM) or Half Mask Variant (HMV), and integrated with the our Surface Support Equipment for a complete surface-supply solution.

FFM & HMV OPTIONS

At its core, SCADE incorporates the Odyssey Full Face Mask — a low-profile system with integrated regulator, side block, and Low Air Warning System (LAWS).

- LAWS: mask-mounted light rail visible to diver and buddy, wirelessly paired with cylinder transmitters.
- White light (170 bar): secondary air in use, ascent required.
- Red light (55 bar): switch to secondary air supply.
- Additional indicators: analogue pressure gauge and digital console (depth, pressure, temperature, gas reserve and dive time).

The system can be reconfigured to a Half Mask Variant by swapping the Odyssey FFM for the Half Mask, with LAWS rail, regulator/mouthpiece, and bailout regulator. Both variants provide identical performance and warning functions.

MILITARY BCD

The Northern Diver Military BCD features a Cordura® outer shell, twin quick-release weight pockets, trim pockets, three OPVs, power/oral inflator, and an integrated 0.35 L emergency cylinder.





From covert reconnaissance and tactical marine missions to complex underwater operations in hostile conditions, SCADA adapts seamlessly to the mission — delivering a secure, uninterrupted air supply and absolute reliability when it matters most.



AIR SUPPLY

- Primary: 10L / 300bar Faber.
- Secondary: 3L / 300bar Faber.

This provides scalable redundancy with more than double the required primary volume and triple the required reserve.

WHY CHOOSE THE SCADA?

- Reduces the risks of equipment malfunction in the field
- Enhanced safety features
- Increased reliability
- Simplified, easy maintenance
- Fully modular – rapid configuration changes depending on your preferences and needs
- Operational interoperability
- Designed for both male & female divers (5th–95th percentile).
- Fully configurable to meet specific operational requirements, ensuring mission-ready adaptability.

MAINTENANCE

A tool and test kit can be coupled with the SCADA system upon request. This kit will contain all necessary equipment required to perform scheduled maintenance.

CERTIFICATIONS

EN250:2014 & PPE Regulation 2016/1425
Cold water and 50m depth compliant
CE marked equipment, NATO compatible

DAMSEL

DIVER AIR MONITORING SYSTEM

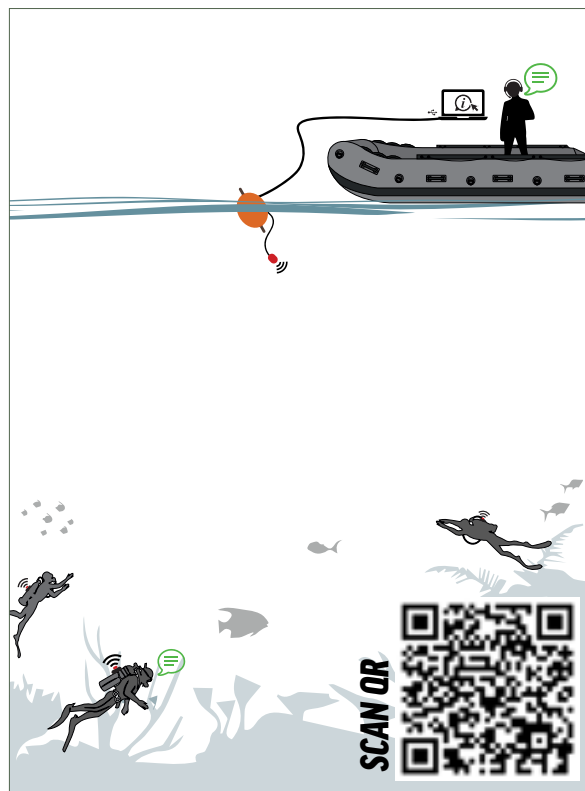
SURFACE AWARENESS, UNDERWATER SAFETY



Monitoring air pressure and supply is critical for all divers, yet it has traditionally been the sole responsibility of each individual. Northern Diver's innovative DAMSEL system transforms this approach, providing surface teams with real-time oversight of divers' breathing systems.

As the first system of its kind, DAMSEL continuously monitors both the diver's main and bailout air supplies, alongside dive depth, delivering live, up-to-date readings. This capability significantly reduces the risk of emergencies, enabling dive instructors and trainers to provide immediate guidance via an underwater communications system should a diver require assistance with their air supply.

Designed for both training and operational deployments, DAMSEL can monitor up to 12 divers simultaneously, ensuring instructors remain fully informed of each team member's status and alerted to any potential issues below the surface. By combining live monitoring with direct communication, the system maximises safety, operational efficiency, and confidence, helping to prevent incidents before they occur.



BCDs

BUOYANCY AIDS

COMBAT-READY BUOYANCY, MAXIMUM CONTROL



MTP/CAMO BCD

- Ergonomically designed
- MTP pattern with a Cordura® outer shell
- Quick release weight pockets (2)
- Fit up to 4kg lead block or 5kg lead shot per pocket
- Trim weight pockets (2) hold 2kg (position: rear of jacket)
- Inflator system includes low profile power & oral inflator, pull dump, toggle pull dump & kidney dump.
- Stainless steel D-rings (5)
- Quick-release buddy line clip
- Generous zipped side pockets (2)
- Additional MTP/camo patterns available upon request
- Sizes: S, M, L, XL
- Colours: black, mtp/camo
- NSN 4220-99-325-2515

SABA BCD

- Ergonomically designed BCD with a Cordura® outer shell, in black. Two quick release weight pockets fit up to 4kg lead block per pocket. Alternatively, the pockets can fit up to 5kg lead shot each.
- The two trim weight pockets on the rear of the jacket can hold 2kg. The inflator system includes a power and oral inflator, pull dump, toggle pull dump and kidney dump.
- Also features 5 stainless steel D-rings, quick-release buddy line clip and 2 generous pockets.
- Lift capacity S (11.2kg) , M (17.33kg) , L (22.43kg)
- Sizes: S, M, L, XL
- Colours: black
- NSN 4220-99-501-1665



SCAN THE QR CODE

To access detailed product information, download technical datasheets, view instructional and demonstration videos, and explore additional resources—or visit ndiver-military.com

CYLINDERS & TANK ACCESSORIES



3L TO 15L - 232BAR TO 300BAR - SECURE, RELIABLE, AND DIVE-READY



FABER STEEL DIVING CYLINDERS

We supply Faber steel diving cylinders with either DIN or A-clamp (international) valves, compatible with all regulators using these systems. Cylinders can be supplied O₂ clean or O₂ serviced with an O₂ clean cross-flow valve, and are suitable for enriched air.

Available in 232 bar and 300 bar, they feature lightweight steel construction, a DIN-convertible valve, optional tactile rubber valve boot, and Faber's corrosion-resistant finish with hot zinc spray, primer, and top coat.

NSN

4220 - 99 - 850 - 2582 (15L)

8120 - 99 - 256 - 7200 (12L)

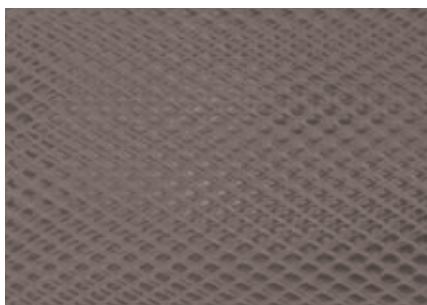
8120 - 99 - 844 - 5031 (7L)

8120 - 99 - 902 - 4568 (3L)



BACK PACK HARNESS

Disperses weight evenly across the hips and back for improved comfort, stability, and reduced fatigue during extended dives or heavy loads.



CYLINDER MESH

Provides grip, protection, and easy handling in wet conditions.
Sizes to fit 10L to 15L
NSN 4220-99-812-2304



PONY CLAMP SYSTEM

Securely attaches a smaller pony cylinder to a main dive cylinder for safe handling and transport.
Sizes: one (fits all cylinders)



BIO TANK LOCKS

Easy to install on any BCD. Securely hold dive cylinders in place, preventing movement during transport or storage.



TANK HANDLE

Secure grip for easy carrying and maneuvering of dive cylinders.
NSN 4220-99-397-9109



CYLINDER BOOTS

Protects the base of a dive cylinder and keeps it stable when upright.
Sizes: 4", 6", 7", 8"
NSN 4220-99-405-0042



LIGHTWEIGHT CYLINDERS

Aluminium-shelled, carbon fibre-wrapped cylinders engineered to EN 12021 and NMA-class magnetic standards. Ideal for EOD diving, they are 60–70% lighter than steel and 30–40% lighter than aluminium cylinders of the same capacity, featuring a seamless 6061 aluminium liner reinforced with high-strength carbon and glass fibre composites. Available in sizes from 0.45 L to 12 L.



CYLINDER CHARGING ASSEMBLY

G 1/4 hose connector compatible with most UK compressor hoses, featuring a screw-type purge valve to safely release pressure after charging. Available in DIN 240 bar and 350 bar versions, it is manufactured to PED 97/23/EC (SEP) standards with QMS ISO 9001, rated for a maximum working pressure of 350 bar and a test pressure of 525 bar. DIN shown, A-clamp available.



300BAR QUICK COUPLINGS

Fast, high-pressure coupling with multi-start thread for refilling air bottles underwater, ensuring no air bubbles are released when connecting or disconnecting. Male: aluminium bronze (DEF STAN 02-833), Female: S/S 316, rated up to 300 bar.
NSN: 4220-99-852-8643 (male)
NSN: 4220-99-811-7892 (female)



MANIFOLD WITH GAUGE ATTACHED

Fixed or portable dual-cylinder charging system allowing simultaneous refills via quick couplings. Features a 0–400 bar HP gauge, HP purge valve for easy disconnection, DIN 232 bar inlet, two male quick coupling outlets, and a durable brass CZ112 main body.



PILLAR VALVE ASSEMBLY

Underwater charging system that lets divers top up backup/pony cylinders with ease, featuring an EN250 cylinder valve (W.P. 232 bar, M25x2), swivel HP non-return valve, 1 m HP flexible hose (W.P. 300 bar), and female quick coupling—designed to prevent water ingress during refills.



SUIT INFLATION SYSTEM

0.4L non-magnetic suit inflation system with custom made cylinder pocket and hose. Hoses are available in 3 standard lengths. Custom lengths, if required, are made to be compatible with the required inflation valve position. The inflation system can be placed in any position, dependent on the equipment used with the drysuit. NSN 4420-99-817-4216

GAUGES / CLASSIC SERIES



CLASSIC CONTENTS

CODE: INST 1
0 - 450 bar
Built-in thermometer
63mm (2.5") face size
Hose length 32"/81cm



CLASSIC CONTENTS & COMPASS

CODE: INST 2
0 - 400 bar
Swivel-hose gauge
40mm (1.6") face size
Hose length 32"/81cm



CLASSIC CONTENTS & DEPTH

CODE: INST 3
450 bar
Built-in thermometer
80m (262') MDI depth gauge & calibration wheel
63mm (2.5") face size
Hose length 32"/81cm



CLASSIC CONTENTS COMPASS & DEPTH

CODE: INST 4
0 - 450 bar
Built-in thermometer
80m (262') MDI depth gauge, compass & bezel
63mm (2.5") face size
Hose length 32"/81cm



HOSES

CODE: INST 18 or INST 15
High pressure and bail out hoses available
Swivel end
Lengths from 31.5"/80cm to 40"/102cm available
Main use: military and commercial diving applications

GAUGES / COMPACT SERIES



COMPACT CONTENTS

CODE: INST 10
400 bar
42mm (1.7") face size
Hose length 32"/81cm



COMPACT CONTENTS & COMPASS

CODE: INST 11
400 bar
42mm (1.7") face size
Hose length 32"/81cm



COMPACT CONTENTS & DEPTH

CODE: INST 12
400 bar
70m (230') MDI depth gauge
42mm (1.7") face size
Hose length 32"/81cm



COMPACT CONTENTS COMPASS & DEPTH

CODE: INST 13
400 bar
70m (230') MDI depth gauge, compass & bezel
42mm (1.7") face size
Hose length 32"/81cm



PRESSURE GAUGE CHECKER

CODE: INST 22 or INST 22A
Up to 232 bar (A-clamp) 300 bar (DIN)
High pressure contents indicator
Push-button relief valve
Attaches to cross flow valve to determine cylinder pressure
Surface use only

UNDERWATER WRIST WEAR



ITEM 88 - WRIST DEPTH GAUGE

- 0 to 50m readout
- Rubber wrist strap
- Accurate & easy reads at shallow depths



INST 6 - WRIST DEPTH GAUGE

- Rack/pinion movement, smooth, precise operation
- 340° scale & luminous dial
- Adjustable screw (for diving in altitude)
- Available in imperial and metric 63mm face size



INST 5 - WRIST COMPASS GAUGE

- Classic style wrist
- Rubber wrist strap
- Stainless steel buckle
- Rotating bezel & sturdy housing
- 60mm face size

ODYSSEY REGULATOR SYSTEM



PRECISION BREATHING, PEAK PERFORMANCE.



The Odyssey Second Stage Regulator is engineered for peak performance in all water environments, offering divers a reliable, high-quality breathing system.

Featuring a pneumatically balanced design, a Venturi lever for dive and pre-dive settings, and a dual-sided exhaust to direct bubbles away, it ensures smooth and effortless breathing. Equipped with a heat exchanger for enhanced cold-water performance, the Odyssey is tested and certified to EN 250:2014 standards, making it suitable for temperatures as low as 4°C and depths up to 50 meters. Lightweight at just 370g and paired with a flexible hose, this regulator delivers both comfort and durability.

Available in multiple configurations to suit different diving requirements. Each variant is designed for reliability, comfort, and performance in all water environments.



Versatile Performance	Suitable for all water environments
Optimised Airflow Control	Venturi lever for easy dive/ pre-dive adjustment
Cold-Water Ready	Integrated heat exchanger for low temperatures
Pneumatically Balanced	Smooth, consistent breathing at all depths.
Dual Exhaust System	Directs bubbles away for improved vis & comfort.
Flexible and Lightweight	Durable flexi hose; 370g.
Efficient Breathing	Averages 1.0 joules/litre at 50m depth in 4°C water.
Temperature Resilient	Storage: -10°C (14°F) to +50°C (122°F).
Depth and Cold-Water Certified	50m rating (164ft) & temps as low as 4°C (39.2°F).
Certified for Safety	EN 12021:2014 compliant for compressed air.
Regulatory Compliance	CE marked to EN 250:2014 & PPE Regulation 2016/425.



The system comprises advanced wireless communication units designed for professional diving operations, providing clear and reliable communication between divers and surface teams to enhance safety and coordination. For the first time, wireless transmissions can be discreetly and securely sent, housed in a completely new, smaller, lighter, and rugged case with a removable lid.

Contents include
 MILCOM 6000, 2 channel wireless transceiver
 Ancillaries handheld mic
 Headset (CDK & SU) with boom mic
 Ear mic assembly - works with both wireless and hard-wired comms units
 Supervisor unit
 Multi chargers housed in hard case



DIGITAL COMMUNICATIONS

Multiple models available, from analogue (0.5 km range) to digital (1.5-3 km range)

CLEAR COMMUNICATION, COMPLETE SITUATIONAL AWARENESS



Stay connected, stay in control – above and below the surface. Northern Diver’s Digital Diver & Surface Communications System delivers crystal-clear, reliable communication for all underwater and surface operations.

The system features 4 switchable channels and includes a diver unit, ear mic assembly, surface unit, transducer, 10 m cable, handheld mic, and chargers.

Comms Distance	500-1500m
Centre Frequency	20-40 kHz
Range	200 Hz ~ 12 kHz
Max Transmit Power	10 Watts
Auto Gain Control	120dB
Receive Sensitivity	-200 dB ~ -190dB*
Max Depth	50m
Battery Service Life	8hrs (at 10% usage rate)
Battery Type	Polymer lithium, 2000 mAh
Charger Input	100-240V AC/50HZ ~60HZ
Charger Output	DC 18.0V/2.0A
Operating	-10 ~ 55°C



HALF-MASK VARIANTS

CLEAR VISION, UNCOMPROMISED PERFORMANCE



BIO METAL STEALTH PRO MASK

- Matt finished stainless steel frame & flange
- Type-D flange: low internal volume 100 cc
- AR (Anti-Reflection) lens
- Avoids reflection from search lights or when an operator is covertly approaching a target
- Easily attach lights, cameras & accessories
- Additional polarized lenses can be fitted



BIO METAL STEALTH PRO NON MAG MASK

- Matt finished non magnetic aluminium frame
- Type-D flange: low internal volume 100 cc
- AR (Anti-Reflection) lens
- Avoids reflection from search lights or when an operator is covertly approaching a target
- The aluminium frame does not allow other accessories to be attached



PHANTOM CLEAR VISION MASK

- Rounded lens gives superb field of vision
- Coated lenses
- Anti-fog technology
- Soft silicone facial skirt & strap
- Double feather-edge seal for comfortable fit
- Patented push-button adjustment buckles



4 WINDOW 413 MASK

- Unique twin split lens design
- Panoramic field of vision
- Surgical grade silicone
- Fits a wide range of face shapes
- Comfortable fit



M235 MASK

- Twin extended lens
- Low volume design
- Excellent field of vision
- Surgical grade silicone
- Fits a wide range of face shapes



PRO VISION MASK

- Tempered impact resistant glass lenses Integrated three prong mount for camera
- Flexible soft silicone skirt
- Adjustable buckle for comfortable fit & seal
- Compatible with: GoPro, Xiaoyi & Sony



CRYSTAL M23 MASK

- Frame-less single window design
- Allows mask to fit closer to users face
- Excellent field of vision
- Easy purging of water inside mask
- Surgical grade silicone
- Fits a wide range of face shapes



CLASSIC FRAMELESS MASK

- High grade tempered glass
- Anti-scratch and shatterproof
- Frameless single lens gives expansive field of view
- Extremely small internal volume
- Soft silicone skirt and single lever buckle



BRAVA MASK

- Low volume and wide field of vision
- Soft silicone skirt = perfect fit
- Patented push-button buckles allow easy, quick strap adjustment
- Anti-fog tech provides clarity of vision

FINS & FIN STRAPS

CLEAR VISION, UNCOMPROMISED PERFORMANCE



JET X FINS

Heavy-duty, negatively buoyant fin
Durable single-mould high-density rubber construction
Vented blade reduces drag and improves downstroke power
Excellent thrust-to-effort ratio
Compact, manoeuvrable design
Stainless steel spring straps with large grip tabs
Secure buckle system keeps spring straps in place
Large grommets for easy hanging or carabiner attachment
Built for harsh environments

Sizes: S, M, L, XL | Colours: red or black



CODA DUAL SPLIT FINS

Patented dual split-fin design
Unique 'nature's wing' shape
Superb power & performance
Heavy duty build quality
Efficient finning on up/down strokes
Lightweight
M (UK 4-6), L (UK 7-10), XL (UK 11+)
NSN 4220-99-325-1902



JET FINS

Metal & plastic buckles
Tested in extreme dive conditions
High quality rubber
Robust & superb endurance
Exceptional finning power
Max endurance and propulsion
Ultimate finning power
M (UK 4-5), L (UK 6-7), XL (UK 8-9),
XXL (UK 9-10), XXXL (UK 11+)



APOLLO BIO FINS

20° blade angle aligns with the natural resting position of the ankle and knee
Split fin allows for more power & less effort than any other fin
Increased speed and reduced fatigue
Consistently rated fastest fin in water
XS (UK 5-6), S (UK 6-7), M (UK 7-8), L (UK 8-9), XL (UK 10-11)
NSN 4220-99-729-3403



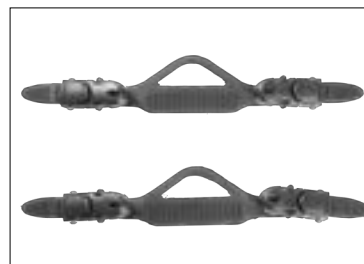
BIO RANGER FINS

Tough, light & compact
Long & short distance ops
100% natural rubber
Dynamic split blade - reduces fatigue
Stainless steel spring straps
Comfortable foot pocket
Anti-slip high traction sole
Low magnetic for EODM/L (UK 8-10), L/XL (UK 10+)



SPRING FIN STRAPS

Marine-grade stainless steel
Flexible rubber outer
Easily fitted to most of dive fins
Quick release metal or plastic buckle
S (UK 6-8), M (UK 9-11), L (UK 12-14)



CODA FINS STRAPS

High-grade rubber strap
2 quick release fastex style buckles
Non-magnetic item
Unique pin design for entering waters from high altitude without the risk of damage
One size only
NSN 4220-99-250-2651

KNIVES & SNORKELS

HIGH PERFORMANCE - SHARP. STRONG. MISSION-READY



HRC50 MILITARY COMBAT KNIFE

The blade is made from high quality 50HRC beta titanium alloy, so it's an ideal dive knife for recreational scuba divers and professionals. With a full shank drop pointed tip blade, the knife is great for cutting, digging and prying. It also has a line cutter further down the blade enabling you to keep the line in place while the blade administers a swifter, cleaner cut - it's specially designed to cut through lines, webbing and rope. The top edge is serrated so the knife can easily be used for sawing.

- 125mm (4.9 inch) titanium blade
- Overall length: 260mm (10.25 inch)
- Self draining, squeeze release locking nylon sheath
- 100% no rust, non magnetic, full shank drop point blade
- Serrated top edge, line cutter
- Sure hand curved grip
- Neoprene leg harness included



MULTI PURPOSE KNIFE

- 90mm (3.5") stainless steel blade
- Reduced risk of rusting
- Sharp tip blade with serrations
- 2 in 1 knife with scissor function
- Chromium plating on blades, compact quick-release sheath
- BC mounting kits are included



LDK RESCUE KNIFE

- 75mm (3") twin edged titanium blade
- 3.0mm (0.1") chisel point safety blade
- Protective hard plastic sheath
- Push button quick release catch
- Handle with rear anchor point
- Quick locate knife handle insert
- Variable width attachment system
- Bracket for 50mm (1.9") webbing
- NSN 4220-99-300-1778



ALPHA TITANIUM KNIFE

- Designed specifically for the military
- 120mm (4.7") titanium blade
- Blade: serrated & sharp edges
- Built in line cutter
- Super sharp and lightweight
- Metal handle butt
- Positive lock mechanism
- Black plastic hard-case sheath
- NSN 4020-99-500-2008



SN1030 SNORKEL

- Splash guard
- Replaceable mouthpiece
- Drop away non-return valve
- Flexible tube
- NSN 4220-99-834-3635



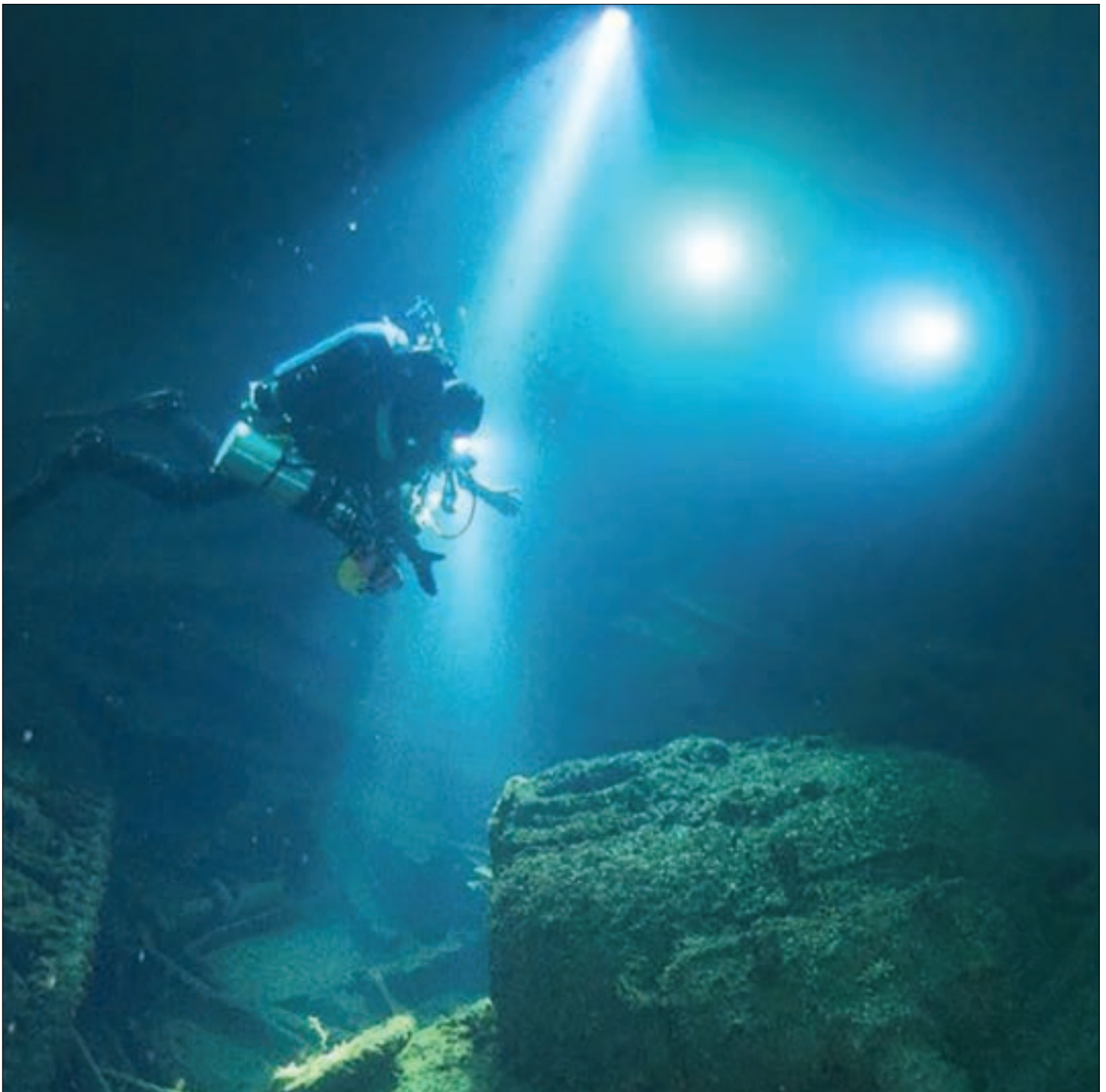
J-TYPE SNORKEL

- All-black snorkel with no valve
- Ideal for use in fast flowing waters & seas with high salt content
- Non replaceable parts
- NSN 4220-99-431-7570



KNIFE STRAPS

- Spare set of rubber knife straps
- For use with all military knives
- Two knife straps included
- NSN 4220-99-679-9585



TACTICAL ILLUMINATION

SURFACE AND SUBSURFACE

Northern Diver's military dive lights deliver rugged, high-output performance when it matters most. Adjustable beams, zoom focus, and extended burn times keep operators visible and in control, whether underwater or on the surface. Built for demanding missions, these lights are compact, reliable, and ready for action.



SCAN THE QR

To access detailed product information, download technical datasheets and view videos or visit ndiver-military.com

WEAPONS MOUNTS

TACTICAL LIGHTS & LASERS

PRECISION MOUNTS FOR LIGHTS, LASERS, AND TACTICAL ADVANTAGE



Northern Diver's tactical torch mounts are engineered for operational flexibility and mission readiness.

Designed to securely attach high-performance torches to weapons or equipment, these mounts can also accommodate optional lasers and cameras, providing enhanced targeting, illumination, and situational awareness.

Rugged, lightweight, and easy to adjust, they ensure reliable performance in the most demanding environments, keeping operators fully equipped and in control during every mission.

- Designed, developed and tested in the UK
- Ultra-Bright LED
- Weapon-mountable design – Picatinny & M-LOK compatible for seamless integration
- Light modes – strobe, high, medium, low – adaptable to mission requirements
- Optional sites lasers to suit all requirements
- Ambidextrous tail switch – fast, intuitive operation under pressure
- Waterproof & impact resistant – IPX8 rated, tested beyond MIL-STD-810G standards
- Rechargeable or battery-powered options





UNDERWATER DIVE LIGHTS & STROBES

ADVANCED UNDERWATER LIGHTING SOLUTIONS FOR MISSION-CRITICAL CLARITY



VARILUX ZOOM

A versatile, zoomable torch designed for tactical and professional diving, offering rapid adjustment from a tightly focused beam for long-range visibility to a wide floodlight for close-quarters operations, ensuring reliable, high-performance illumination in all conditions.



VARILUX ABYSS

A high-performance canister dive light designed for demanding operations, featuring a powerful hand-mounted lamp for precise, hands-free illumination and a rugged power pack that mounts securely to the dive tank for extended reliability and endurance underwater.



FUSION X

A rugged, high-output dive light built for tactical and military operations, delivering up to 4,500 lumens with extended burn times, precision 11° beam for focused illumination, and dependable performance to 100m. Designed for reliability in demanding environments.



FUSION R

Variable output 300 to 2000 lumens
Colour temp 5300K to 7300K
3.5 to 20 hours burn time
IP68 waterproof rated
Super bright SST40 LED
LED lifespan 100,000 hours
Depth tested to 100m (332')
Magnetic USB charging port
Beam distance 309m (1014')
Beam intensity 24800 cd
Impact resistant 1.5m (5')
Modes high-med-low and strobe
Built in 21700 rechargeable battery
Weight: 196g (0.43oz)
Supplied with wrist lanyard



FUSION X4

Super high 310 lumens output
Natural daylight colour temp 5300K
8.5hr total continuous burn time
New optically enhanced reflector
Philips Lumileds T 3w Luxeon LED
Depth tested to 95m (311')
Tough poly carbonate body
Aluminium head
Protective rubber casing
Colour temperature of 5300K
Double O-ring seals
External magnetic on/off switch
Supplied with wrist lanyard



MINI QUEST

230 lumens output
Powerful 'spot' beam
8.5hr total continuous burn time
Variable output technology
100% full power output for 3.5hrs, gradually decreases over the remaining NEW Philips Lumileds 3w Luxeon LED
Depth tested to 95 metres
Tough poly carbonate body with an aluminium torch head
Double O-ring seals
Rear mount magnetic on/off switch
Optional helmet mount



VARILUX TRAVEL

Easy magnetic charging
Burn time: 3.5h - 50h
Beam distance: 370m (1214')
Peak beam intensity: 30000cd
Impact resistance: 1m (3'3)
Depth rating: 100m (328')
Material: anodised aluminium
LED: SST40
LED lifespan: 100000 h



VARILUX MICRO

Easy magnetic charging
Burn time: 2h-28h
Beam distance: 280m (919')
Peak beam intensity: 20000cd
Impact resistance: 1m (3'3)
Depth rating: 100m (328')
Material: anodised aluminium
LED: SST40
LED lifespan: 100000 h



DISTRESS MARKER

Operates continuously for a min 8 hrs
Auto water & photocell activation
IR filter for night vision (NVG) viewing
Waterproof to 15.3m
60.9m diver version available
IR filter blocks all visible light
Blue filter distinguishes strobe from ground fire when in place
250000 peak lumen's per flash
Flash rate: 50 ± 10 per minute
Vis: Military tested at 6 miles (9.6km)



LED STROBE

Single 1W LED - 160 lumens output
Upgraded 'silent' strobe unit
Strobe visible up to 2 miles away
Continuous burn time of up to 6 hours
Depth tested to 50m (164')
Magnetic 'function' switch
One-piece impact resistant ABS body
Twin attachment points
Perfect emergency signalling device
Handy to attach to a BCD or keep in your BCD pocket as a back-up torch
Twin anchor points (fit 32mm webbing)
Weight: 0.188kg (6.6oz)
Supplied with wrist lanyard



REEL & TORCH

Anodized aluminium
Free-flowing spool with thumb operated spool-lock
Sprung reel handle for easy storage
Top mounted' ultra-bright 6 LED torch
Continuous flash mode for emergency
Torch is removable
Can be used for wreck diving and deployment of DSMB's or lift bags
60 metres of orange line
Weight: 0.7kg (24oz)
Includes AA batteries
Colour: orange/black



AQ4 JOTRON STROBE

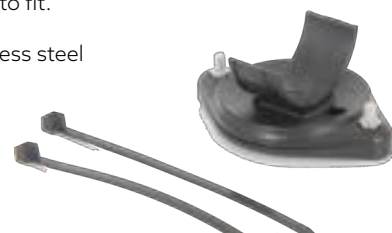
Multi-purpose marking 7 distress light
Designed for personal safety
Various applications (diving & fire fighting)
Manually activated
High intensity xenon flash strobe light
Lightweight
Waterproof to 300m (option of 500m)
Flash rate: 50 flashes/minute
Operation up to 12 hours at 15°C, with decreased flash rate at the end of the battery life
Torch length: 160mm



UNIVERSAL HELMET MOUNT

This helmet mount fits a wide range of torches and dive lights, with a variable turn-and-tilt function for precise positioning. Quick and simple to use, it allows a torch to be securely attached to the helmet, providing hands-free illumination from the diver's point of view. It is lightweight, durable, and easy to fit.

Material: ABS plastic and marine-grade 316 stainless steel
Fit to most helmets and easy to assemble
Compatible with multiple torches
Waterproof and perfect for underwater use
Anti-slip design, stable mount, adjustable angle
Easy access to your mounted torch



WEIGHTS, BUOYS & REELS

TRUSTED ESSENTIALS FOR UNDERWATER OPERATIONS



LEAD COATED WEIGHTS

Plastic coated for corrosion protection
Corners are smooth & rounded for additional comfort
Twin webbing slots for use with dive belt
Sizes: 1kg, 2kg, 3kg, 4kg
NSN 4420-99-096-1816



DIVER WEIGHT BELT

Compatible with lead coated weights
Simple method to configure your weight
Position of the weights can be adjusted
Size: one
NSN 4420-99-321-5329



LEAD FILLED BAGS

3kg lead shot bags
Using number 3 un-graphited lead shot
Suitable for use with a BCD or our pouch weight belt
NSN 4420-99-212-9328



POUCH WEIGHT BELT

Comfortable solution to hold waist weight
Individual pouches keep weight secure
Reduced risk of snagging
Stainless steel clasp
Sizes: S, M, L
NSN 4420-99-349-6255



2KG SLAB WEIGHT

2kg long lead block
Coated for corrosion protection
NSN 4420-99-349-6255



ANKLE WEIGHTS

Pre-filled lead shot ankle weights
Elasticated quick release fastex buckle
Adjustable design
Sizes: S (450g), L (750g)
NSN 4420-99-349-6255



NYLON WEIGHT BELT

Webbing length: 140cm
Can be trimmed to fit any diver
Stainless steel quick release buckle
NSN 4420-99-924-1407



LEAD CRUCIFORM SINKERS

Layout search bed grids
PVC coated, brass inglet fields & clips
Inglet fields connect to ground line & SMB
Available weights 5kg, 10kg, 20kg
NSN 4420-99-810-0604 (5kg)



30M WEIGHTED LINE REEL

30m of 5mm cord with lead weighted core
304-grade stainless steel
Spring-loaded handle, anti-slip grip
Attachment point for an LED torch
NSN 4420-99-502-2774 (5kg)

SCAN QR



1.8M SMB & 45M DIVE REEL

Auto dump valve for over-inflation
Manual operation optional
Weighted self-sealing base
Webbing attachment strap
Top-mounted light stick pocket
NSN 2050-99-989-6339



DIVER WRIST SLATE

Three accessible pages, allowing the user to store & record substantially more information than regular slates.
Includes pencil on elastic cord plus pencil storage point.
NSN 4220-99-156-0072



BUDDYLINE

Black nylon rope
Stainless steel screw gate carabiner
Spliced into soft ends
Rope: 228cm (89.8"), 8mm (0.3") dia.
Total length inc. hooks 300cm (118")
NSN 8465-99-345-8169



FLOAT RING

Oval shaped
Rigid PVC float
Diameter 70mm



KEVLAR® CURLY CORD

Stretchable Kevlar® cord
Used to secure knife to drysuit
Supplied with x2 securing zip ties
NSN 4220-99-968-3213



PVC BUOY & 45M LINE

Centre hole running the length of buoy.
Diameter: 26mm or 25mm inflated
Wooden rod (53cm)
Cylume sticks optional
Line is 45m long
Line marked at 1m increments
NSN 4220-99-431-7350



600G LOCATION MARKER

600g location marker float
Reusable, with 40m line length.
High vis strobe : Burn time 7 days+
High vis ABS yellow foam body
Available with 1kg weight



5KG LOCATION MARKER

5kg location marker float
Reusable, with 80m line length.
High vis strobe : Burn time 7 days+
High vis ABS yellow foam body
Available with 1kg and 5kg weights



SAFETY STOP JON LINE

Deco/safety stop jon line
Useful in strong currents
Long black nylon webbing
Carabiner, one end & a hook on the other
Hook/carabiner attaches to the downline



ERGO 270 TPS SH

- Compact yet powerful breathing air compressor
- Equipped with four TPS (Tropical Plus Superdry) pumping units
- Flexible power options: electric motors or petrol/diesel engines (Honda petrol, Kohler diesel)
- Full monitoring control panel with pressure gauges
- Autostop feature with adjustable electronic pressure switch
- Automatic condensate drainage
- Rotation direction control
- Two high-pressure hose connections
- Filtration system with dual Hyperfilters for superior air quality
- Optional remote charging panel available



ERGO TPS ELECTRIC

- Compact, high-performance breathing air compressor
- Equipped with four TPS (Tropical Plus Superdry) pumping units
- Runs on electric motors or engines (Honda petrol or Kohler diesel options)
- Control panel with comprehensive monitoring system and pressure gauges
- Autostop feature with adjustable electronic pressure switch
- Automatic condensate drainage
- Rotation direction control
- Two high-pressure hose connections
- Advanced filtration with dual Hyperfilters for superior air quality
- Optional remote charging panel available



FORCE FOUR ELECTRIC

- Professional-grade compressor for large charging capacities
- Designed for hot, poorly ventilated, or tropical environments
- Intuitive control panel with electric motor operation
- Four powerful pumping units exposed for optimal cooling
- Equipped with standalone Hyperfilter purification system
- Automatic condensate drainage included
- Recommended Tornado high-pressure dryer for extended filter life
- Upgrades: presec system for monitoring filter saturation, oversized Megafilter cartridges & remote refill panel with 2 or 4 outlets



SILENT ELECTRIC

- Soundproofed compressor operating below 70 dB for quiet, intensive use
- Designed for high refill capacities
- Four front high-pressure filling connections
- Easy use control panel with electric motor and robust pumping units
- Recommended Tornado high-pressure dryer for extended filter life
- Optional features: presec system for monitoring filter saturation, SAM system for multigas analysis, remote charging panel

FIRE FIGHTING SPARES

PREPARED, PROTECTED, AND ALWAYS READY



EEBD CONTAINERS

Provide secure, rapid-access storage for Emergency Escape Breathing Devices. Built to withstand demanding environments, they are rugged, lightweight, and clearly identifiable, ensuring vital life-saving equipment is always protected and ready for immediate deployment.

NSN
8145-99-766-2694 (2 BAY)
8145-99-766-2695 (3 BAY)
8145-99-765-8417 (4 BAY)
8145-99-765-8418 (5 BAY)



HARNESS EXTENSION LOCKER

This fire hose storage cabinet is designed to protect your fire hose and equipment from accidental damage
NSN 4210-99-758-1981



CARCASS ASSEMBLY

6mm aluminium alloy sheet
Powder coated finish
NSN 4420-99-373-9223 (locker)
NSN 5340-99-352-4208 (locker door)



CYLINDER BRACKET

Aluminium cylinder bracket
Adjustable strap holds cylinder in place
Height: 670mm, Weight: 187mm
NSN 4420-99-187-1748



TOTE BOARD

Provide surface teams with a reliable platform to manage diver communications and status monitoring.
NSN 7460-99-957-3608



EDBA CONTROL BOARD

designed to manage and distribute emergency air supplies to multiple users simultaneously.
NSN 7460-99-832-8307



POUCH GUIDELINE

Pouch houses guideline for use in entering smoke filled buildings
NSN 4240-99-923-4048



BA CONTROL ARMLET

This armlet provides a simple yet vital method of tracking personnel using breathing apparatus. Worn securely on the arm. Durable, highly visible, and designed for operational environments, they are an essential safety tool for managing missions with confidence. NSN 8455-99-923-4047

TEST & ANALYSER EQUIPMENT

ENGINEERED FOR RELIABLE ANALYSIS



PRESSURE POT

Internal dimensions: 250 x 285mm, weight: 46.5kg
Max inlet pressure: 9 bar, pressure relief valves: 10.35 bar
Max depth reading: 90m
Inlet connection: Hansen quick coupling
6-point locking mechanism, quick release action
Removable plastic liner, polycarbonate window
Can also be used to check depth gauge accuracy
Chrome plated mild steel
Maximum depth reading of 90m

Size: 14L
NSN 4420-99-238-9559

INLINE GAS ANALYSER

Suitable for pre-use checks on compressed air cylinders and continuous monitoring of surface-supplied breathing gas, with adaptability for gases like helium, CO, CO₂, and propane. Features a built-in memory stick port for equipment performance monitoring. Includes power supply/battery charger with adapters, hand priming pump for calibration, factory-set flow regulator for SSD systems, connection tube, humidity sensor, and self-calibrating gas conditioning circuit.

NSN 4420-99-438-3308



POMA OXYGEN MONITOR

Designed to measure oxygen levels from 0.1–100% for tank verification, the POMA features a large digital display and an internal temperature-compensated electrochemical sensor. Powered by a 9V battery lasting about 1 year, it automatically switches off after 10 minutes to preserve battery life. Conforms to BS EN 50270 & BS EN 61000-6-3. Conforms to BS EN 50270 & BS EN 61000-6-3.

NSN 6630-99-507-2816

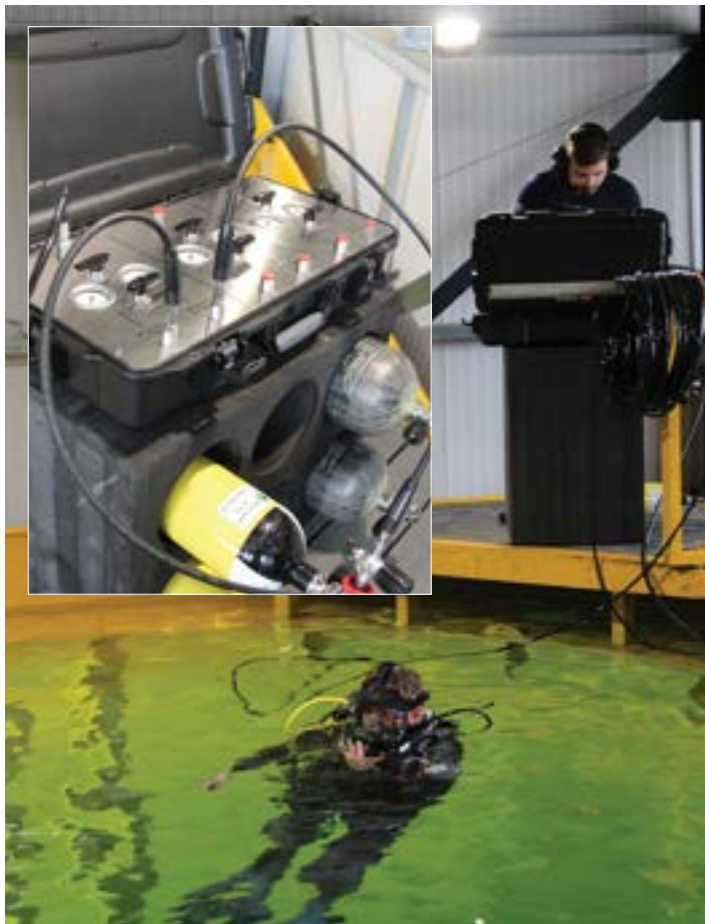


Oxygen sensor spare part - 3 year life span, Electrochemical transducers for measuring the oxygen partial pressure.



SURFACE SUPPLY PANEL

PRECISION BREATHING SUPPORT FOR CRITICAL MISSIONS



The 3-Diver Surface Supply Panel is a compact, rugged air delivery system designed for mission-critical military diving operations. Supporting two active divers and one standby diver, it delivers independent high-pressure air supply via reinforced umbilicals, with precision regulators and clearly labelled control valves for real-time monitoring.

Housed in a R.A.I.D case, the panel is engineered for harsh offshore and onshore environments, offering rapid cylinder replacement, secure transport, and operational reliability.

High-pressure hoses are stored and protected to prevent kinking and maintain long-term integrity, while diver connections use finger-style restraints and stainless steel pin carabiners, ensuring secure, load-rated attachment to the BCD.

The system is fully portable, robust, and ready for immediate deployment, delivering safe and responsive breathing support in all operational conditions.

HYPERBARIC CHAMBERS

CUSTOM BUILT TO SUIT YOUR NEEDS - IMCA STANDARD DNV CERTIFIED



Robust, sealable pressure vessels for decompression, re-compression, and personnel transport. Features include twin locks, moon pool or dry airlocks, control panels, and umbilical connections for gas, power, and communications. Custom-built to client specifications with a 55 MSW depth rating.

Transport Chambers

The 5-man transport chamber accommodates a patient and attendant. Lightweight and compact, it is easily deployed by vehicle or helicopter, complete with chamber, control system, trolley, communications, and on-board gas.



INFLATABLE CRAFTS & EQUIPMENT

120

BOATS WITH ALUMINIUM FLOORS OR AIR DECKS

DS320
DS380
DS420
DS480
DS520

122

SLEDS & RAFTS

RR2 SLED
RR3 SLED
RR4 SLED
RR5 RAFT
RR-MAX RAFT

123

WALKWAYS & AIRTRACKS

1M
2M
5M
8M
10M

CUSTOM INFLATABLES ARE AVAILABLE
UPON REQUEST - CONTACT THE MILITARY
SALES TEAM.

MILITARY INFLATABLE BOATS

BUILT FOR MISSION. READY FOR DEPLOYMENT



Northern Diver inflatable boats are built for demanding military, commercial, and professional operations. Designed for strength, stability, and rapid deployment, they deliver proven performance in the harshest environments.

KEY FEATURES

- Lightweight hulls, easily carried and deployed by a two-man crew.
- Keel rubbing strake for protection during beaching or impact.
- Combined lifting handle and towing eye for rapid handling and deployment.
- Built tough for extended military use, with durability proven in commercial and private sectors.

RUGGED CONSTRUCTION & VERSATILITY

Available with aluminium floors or advanced DWF air decks.

Lightweight, compact, and easily transported — inflated, deflated, carried, or stowed.

Rapid deployment capability for immediate operational readiness.

Stable, highly manoeuvrable, and responsive — ideal for tactical use and effective casualty recovery in shallow or confined waters.



DURABILITY & SURVIVABILITY

- Reinforced collars and seams for extended operational life in harsh environments.
- Anti-abrasion material for beach landings, rocky shores, and heavy use.
- Rigid keel or DWF air deck for stability in rough waters.

RAPID DEPLOYMENT & MOBILITY

- Quick inflation/deflation systems for immediate operational readiness.
- Compact folding or stowage for transport by land, air, or ship.
- Lightweight designs for rapid two-man deployment.

TACTICAL VERSATILITY

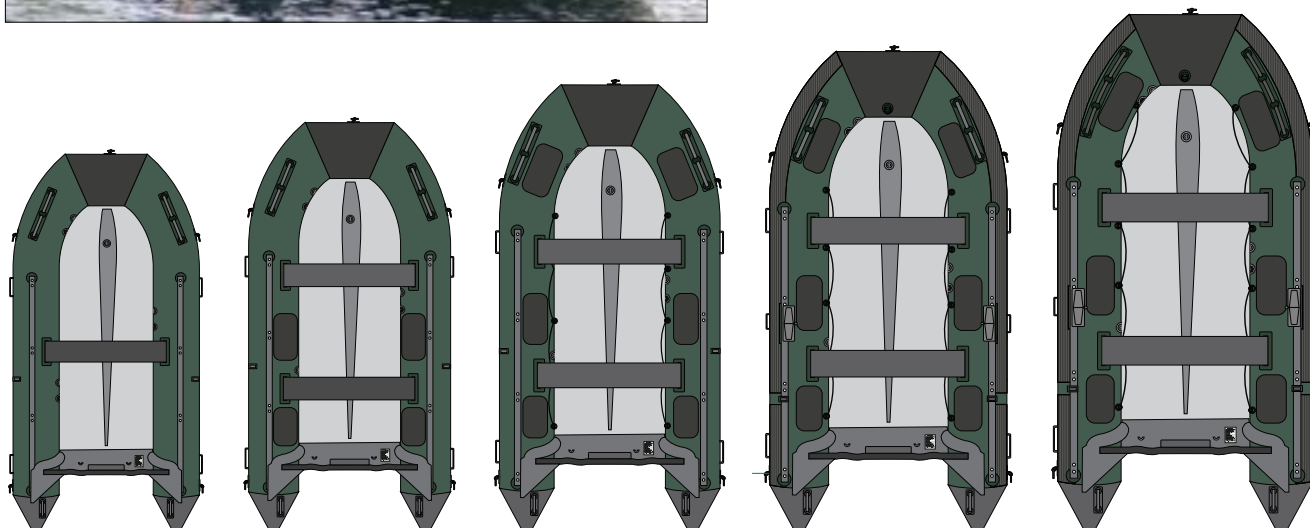
- Compatible with various engines for speed or manoeuvrability requirements.
- Can be fitted with weapon mounts or mission-specific gear.
- Low-profile options for stealth and reconnaissance missions.

SAFETY & OPERATIONAL FEATURES

- Multiple grab handles and towing points for rescue/recovery operations.
- Keel rubbing strake for beaching and collision protection.
- Air deck or aluminium floor options for tailored performance.

CUSTOMISATION & MISSION-SPECIFIC OPTIONS

- Sizes from DS320-DS520 for individual operators to full teams.
- Custom builds available for specific operational needs.
- Optional extras: seating, storage compartments, lights, anchors, and more.



INFLATABLE SLEDS/RAFTS

RELIABLE PERFORMANCE IN EVERY ENVIRONMENT



Northern Diver inflatable sleds and rafts are engineered for rapid deployment, tactical versatility, and reliable performance in the toughest conditions.

Lightweight, compact, and highly manoeuvrable, they enable fast transport over water, snow, or mixed terrain, providing a critical advantage for military operations.

DURABLE, MISSION-READY CONSTRUCTION

- Reinforced inflatable collars and heavy-duty materials for extended operational life.
- Abrasion-resistant surfaces ideal for rough terrain, rocky shorelines, and harsh environments.
- Maximise stability and load capacity.

RAPID DEPLOYMENT & EASY TRANSPORT

- Lightweight designs, often operable by a two-man team.
- Quick inflation and deflation for immediate operational readiness.
- Compact storage and stowage for land, air, or sea transport.

TACTICAL VERSATILITY

- Suitable for personnel transport, casualty evacuation, and equipment carriage.
- Can be fitted with engines, tow points, or modular attachments for mission-specific requirements.
- Stealth-ready designs for reconnaissance or covert insertions.

CUSTOMISABLE & FULLY CONFIGURABLE

- Multiple sizes to suit single operators or full-team deployments.
- Optional extras include seating, grab handles, lights, anchors, and more.
- Fully customisable to meet specific operational requirements.

PERFORMANCE YOU CAN TRUST

Engineered for reliability, durability, and maximum manoeuvrability, Northern Diver inflatable sleds and rafts are the ideal solution for tactical mobility in waterborne and mixed-terrain operations.



INFLATABLE WALKWAYS

DEPLOY FAST. OPERATE ANYWHERE



Inflatable walkways and air tracks provide a robust, flexible solution for establishing operational mobility in challenging environments.

Designed to support heavy military equipment and personnel, they enable rapid movement across water, soft ground, or uneven terrain.

DURABLE, MISSION-READY CONSTRUCTION

Constructed from high-strength, abrasion-resistant materials for long operational life. Inflatable, rigid air deck design provides exceptional load-bearing capacity while remaining lightweight and transportable. Can be linked together to form extended walkways, bridges, or operational platforms for large-scale deployments.

RAPID DEPLOYMENT & MOBILITY

- Quick to inflate, deploy, and deflate, allowing immediate operational readiness.
- Lightweight and compact for transport by land, air, or sea.
- Easy to handle and manoeuvre in tactical or austere environments.

VERSATILE & CONFIGURABLE

- Suitable for personnel movement, vehicle support, or equipment staging.
- Can be customised in length, width, and load capacity to meet specific mission requirements.
- Compatible with other Northern Diver inflatable systems for integrated operational solutions.

OPERATIONAL RELIABILITY

- Maintains stability under heavy loads, even on soft or uneven surfaces.
- Engineered for extreme conditions, ensuring dependable performance in any operational scenario.



SCAN THE QR

To access detailed inflatables product information, download technical datasheets and view videos or visit ndiver-military.com

HEAD OFFICE

Northern Diver International Ltd,
East Quarry
Appley Lane North
Appley Bridge
Wigan
Lancashire
WN6 9AE, UK

VISIT US

Just 5 minutes from the M6 (J27), with Manchester & Liverpool airports only 40 minutes away. Wigan North Western station is 2 hours 3 minutes from London Euston. We are happy to collect and return clients for a seamless visit.

CONTACT US

Melanie Simm
Email: mel@ndiver.com
Office: +44(0) 1257 256 949
Mobile: +44(0) 7877 693 876

Neil Tordoff
Email: neil@ndiver.com
Office: +44(0) 1257 256 936
Mobile: +44(0) 787 061 533

ONLINE

www.ndiver-military.com
[@ndiver_military](#) on Instagram